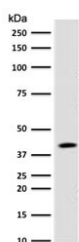


BMI1 Antibody [clone PGRF4-1] (V7401)

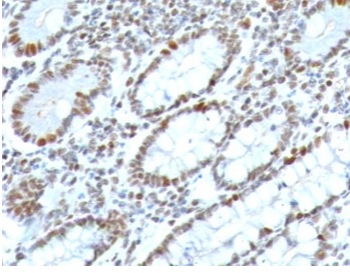
Catalog No.	Formulation	Size
V7401-100UG	0.2 mg/ml in 1X PBS with 0.1 mg/ml BSA (US sourced) and 0.05% sodium azide	100 ug
V7401-20UG	0.2 mg/ml in 1X PBS with 0.1 mg/ml BSA (US sourced) and 0.05% sodium azide	20 ug
V7401SAF-100UG	1 mg/ml in 1X PBS; BSA free, sodium azide free	100 ug
V7401IHC-7ML	Prediluted in 1X PBS with 0.1 mg/ml BSA (US sourced) and 0.05% sodium azide; *For IHC use only*	7 ml

Bulk quote request

Availability	1-3 business days
Species Reactivity	Human
Format	Purified
Host	Mouse
Clonality	Monoclonal (mouse origin)
Isotype	Mouse IgG1, kappa
Clone Name	PGRF4-1
Purity	Protein G affinity chromatography
UniProt	P35226
Localization	Nuclear
Applications	Immunohistochemistry (FFPE) : 1-2ug/ml Prediluted IHC Only Format : incubate for 30 min at RT (1)
Limitations	This BMI1 antibody is available for research use only.



Western blot testing of human 293T lysate with BMI1 antibody (clone PGRF4-1).
Expected molecular weight: 37-43 kDa.



IHC testing of FFPE human colon carcinoma with BMI1 antibody (clone PGRF4-1).
HIER: boil tissue sections in pH 9 10mM Tris with 1mM EDTA for 10-20 min followed by cooling at RT for 20 min.

Description

The B cell-specific moloney murine leukemia virus integration site 1 (Bmi-1) is a transcriptional receptor of the polycomb gene family involved in several cellular processes including cell-cycle regulation, apoptosis, and maintenance of adult and neoplastic stem cells by providing self-renewal capacity. Further, Bmi-1 expression has been associated with malignant transformation, tumor progression, metastatic disease, and poor prognosis in human malignancies.

Application Notes

Optimal dilution of the BMI1 antibody should be determined by the researcher.

1. The prediluted format is supplied in a dropper bottle and is optimized for use in IHC. After epitope retrieval step (if required), drip mAb solution onto the tissue section and incubate at RT for 30 min.

Immunogen

A portion of amino acids 142-326 from the human protein was used as the immunogen for the BMI1 antibody.

Storage

Store the BMI1 antibody at 2-8°C (with azide) or aliquot and store at -20°C or colder (without azide).