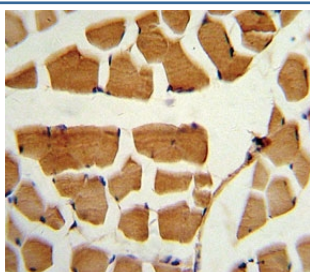


BMI1 Antibody (F48074)

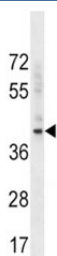
Catalog No.	Formulation	Size
F48074-0.4ML	In 1X PBS, pH 7.4, with 0.09% sodium azide	0.4 ml
F48074-0.08ML	In 1X PBS, pH 7.4, with 0.09% sodium azide	0.08 ml

[Bulk quote request](#)

Availability	1-3 business days
Species Reactivity	Human
Predicted Reactivity	Mouse, Bovine, Chicken
Format	Antigen affinity purified
Host	Rabbit
Clonality	Polyclonal (rabbit origin)
Isotype	Rabbit Ig
Purity	Antigen affinity
UniProt	P35226
Applications	Western Blot : 1:1000 IHC (Paraffin) : 1:10-1:50
Limitations	This BMI1 antibody is available for research use only.



IHC analysis of FFPE human skeletal muscle stained with BMI1 antibody



BMI1 antibody western blot analysis in K562 lysate. Predicted molecular weight: 37-43 kDa.

130
95
72
55
43
34
26
1 2

Western blot analysis of BMI1 antibody and 293 lysate in the presence (1) and absence (2) of immunizing peptide.

Description

BMI is a component of the Polycomb group (PcG) multiprotein PRC1 complex, a complex required to maintain the transcriptionally repressive state of many genes, including Hox genes, throughout development. [UniProt]

Application Notes

Titration of the BMI1 antibody may be required due to differences in protocols and secondary/substrate sensitivity.

Immunogen

A portion of amino acids 257-286 from the human protein was used as the immunogen for this BMI1 antibody.

Storage

Aliquot the BMI1 antibody and store frozen at -20oC or colder. Avoid repeated freeze-thaw cycles.