

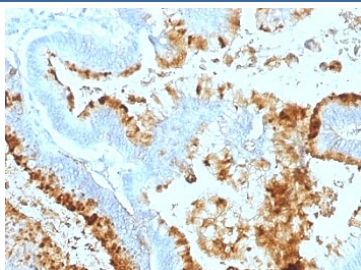
## Blood Group Lewis a Antibody [clone 7LE] (V3058)

Catalog No.	Formulation	Size
V3058-100UG	0.2 mg/ml in 1X PBS with 0.1 mg/ml BSA (US sourced) and 0.05% sodium azide	100 ug
V3058-20UG	0.2 mg/ml in 1X PBS with 0.1 mg/ml BSA (US sourced) and 0.05% sodium azide	20 ug
V3058SAF-100UG	1 mg/ml in 1X PBS; BSA free, sodium azide free	100 ug
V3058IHC-7ML	Prediluted in 1X PBS with 0.1 mg/ml BSA (US sourced) and 0.05% sodium azide; *For IHC use only*	7 ml

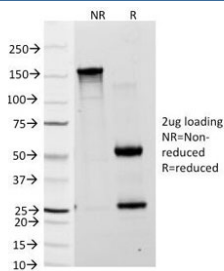
 Citations (10)

[Bulk quote request](#)

Availability	1-3 business days
Species Reactivity	Human, Mouse
Format	Purified
Host	Mouse
Clonality	Monoclonal (mouse origin)
Isotype	Mouse IgG1, kappa
Clone Name	7LE
Purity	Protein G affinity chromatography
UniProt	Not Applicable
Localization	Cell membrane, cytoplasmic and extracellular
Applications	Flow Cytometry : 0.5-1ug/10 <sup>6</sup> cells Immunofluorescence : 0.5-1ug/ml Immunohistochemistry (FFPE) : 0.5-1ug/ml for 30 min at RT
Limitations	This Blood Group Lewis a antibody is available for research use only.



IHC: Formalin-fixed, paraffin-embedded human colon carcinoma stained with Blood Group Lewis a antibody (clone 7LE).



SDS-PAGE Analysis of Purified, BSA-Free Blood Group Lewis a Antibody (clone 7LE).  
Confirmation of Integrity and Purity of the Antibody.

## Description

Recognizes a carbohydrate determinant of Gal 1-3 (Fuc 1-4) GlcNAc which is blood group antigen Lewis A. It is present primarily on epithelial cells such as colon and kidneys. In the tumors and dedifferentiated tissues, decrease of Lewis A antigen was observed. Lewis A (type 1 chain) is expressed in colonic epithelial cells and may be useful for detection of gastrointestinal tumors, pancreatic cancer, and colorectal tumors. Blood group related antigens represent a group of carbohydrate determinants carried on both glycolipids and glycoproteins. They are usually mucin-type, and are detected on erythrocytes, certain epithelial cells, and in secretions of certain individuals. Sixteen genetically and biosynthetically distinct but inter-related specificities belong to this group of antigens, including A, B, H, Lewis A, Lewis B, Lewis X, Lewis Y, and precursor type 1 chain antigens.

## Application Notes

Optimal dilution of the Blood Group Lewis a antibody should be determined by the researcher.

1. Staining of formalin-fixed tissues requires boiling tissue sections in 10mM Citrate buffer, pH 6.0, for 10-20 min followed by cooling at RT for 20 min.
2. The prediluted format is supplied in a dropper bottle and is optimized for use in IHC. After epitope retrieval step (if required), drip mAb solution onto the tissue section and incubate at RT for 30 min.

## Immunogen

Mucins isolated from ovarian cyst fluid were used as the immunogen for the Blood Group Lewis a antibody.

## Storage

Store the Blood Group Lewis a antibody at 2-8°C (with azide) or aliquot and store at -20°C or colder (without azide).