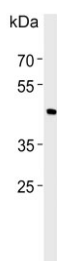


## BHLHE41 Antibody / BHLH3 (F54419)

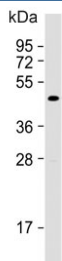
Catalog No.	Formulation	Size
F54419-0.4ML	In 1X PBS, pH 7.4, with 0.09% sodium azide	0.4 ml
F54419-0.08ML	In 1X PBS, pH 7.4, with 0.09% sodium azide	0.08 ml

[Bulk quote request](#)

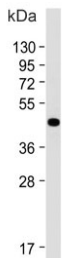
<b>Availability</b>	1-3 business days
<b>Species Reactivity</b>	Human, Mouse
<b>Format</b>	Purified
<b>Host</b>	Rabbit
<b>Clonality</b>	Polyclonal (rabbit origin)
<b>Isotype</b>	Rabbit Ig
<b>Purity</b>	Antigen affinity purified
<b>UniProt</b>	Q9C0J9
<b>Localization</b>	Nuclear
<b>Applications</b>	Western Blot : 1:500-1:2000 Immunofluorescence : 1:25 Flow Cytometry : 1:25 (1x10 <sup>6</sup> cells)
<b>Limitations</b>	This BHLHE41 antibody is available for research use only.



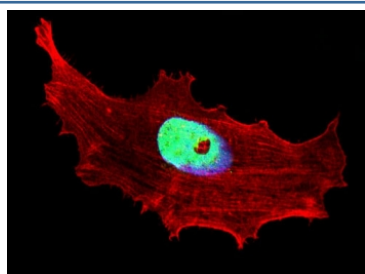
Western blot testing of human RD cell lysate with BHLHE41 antibody. Predicted molecular weight ~50 kDa.



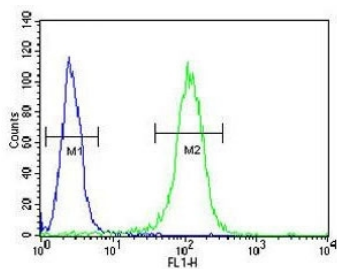
Western blot testing of human brain lysate with BHLHE41 antibody. Predicted molecular weight ~50 kDa.



Western blot testing of mouse brain lysate with BHLHE41 antibody. Predicted molecular weight ~50 kDa.



Immunofluorescent staining of fixed and permeabilized human MCF7 cells with BHLHE41 antibody (green), DAPI nuclear stain (blue) and anti-Actin (red).



Flow cytometry testing of human NCI-H460 cells with BHLHE41 antibody; Blue=isotype control, Green= BHLHE41 antibody.

## Description

BHLHE41 may be a transcriptional repressor that represses both basal and activated transcription.

## Application Notes

The stated application concentrations are suggested starting points. Titration of the BHLHE41 antibody may be required due to differences in protocols and secondary/substrate sensitivity.

## Immunogen

A portion of amino acids 17-46 from the human protein was used as the immunogen for the BHLHE41 antibody.

## Storage

Aliquot the BHLHE41 antibody and store frozen at -20oC or colder. Avoid repeated freeze-thaw cycles.

