

Beta Catenin Antibody [clone 5H10] (V3249)

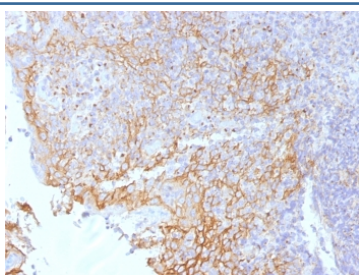
Catalog No.	Formulation	Size
V3249-100UG	0.2 mg/ml in 1X PBS with 0.1 mg/ml BSA (US sourced) and 0.05% sodium azide	100 ug
V3249-20UG	0.2 mg/ml in 1X PBS with 0.1 mg/ml BSA (US sourced) and 0.05% sodium azide	20 ug
V3249SAF-100UG	1 mg/ml in 1X PBS; BSA free, sodium azide free	100 ug



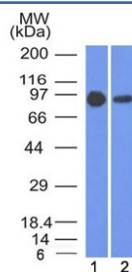
Citations (14)

[Bulk quote request](#)

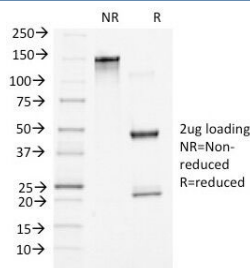
Availability	1-3 business days
Species Reactivity	Human, Mouse
Format	Purified
Host	Mouse
Clonality	Monoclonal (mouse origin)
Isotype	Mouse IgG1, kappa
Clone Name	5H10
Purity	Protein G affinity chromatography
UniProt	P35222
Localization	Cell surface, cytoplasmic, cell junctions
Applications	Flow Cytometry : 0.5-1ug/million cells Immunofluorescence : 1-2ug/ml Western Blot : 0.5-1ug/ml Immunohistochemistry (FFPE) : 1-2ug/ml for 30 min at RT
Limitations	This Beta Catenin antibody is available for research use only.



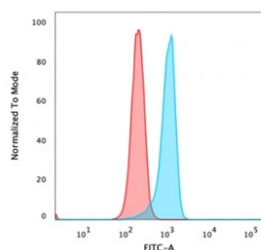
IHC testing of FFPE human tonsil tissue with Beta Catenin antibody (clone 5H10). Required HIER: boil tissue sections in 10mM Tris with 1mM EDTA, pH 9.0, for 10-20 min.



Western blot testing of human 1) A431 and 2) A549 cell lysate with Beta Catenin antibody (clone 5H10). Predicted molecular weight ~85 kDa, but routinely observed at 90-95 kDa.



SDS-PAGE Analysis of Purified, BSA-Free Beta Catenin Antibody (clone 5H10). Confirmation of Integrity and Purity of the Antibody.



Flow cytometry testing of PFA-fixed human HeLa cells with Beta Catenin antibody (clone 5H10); Red=isotype control, Blue= Beta Catenin antibody.

Description

Beta Catenin is a dual function protein, regulating the coordination of cell-cell adhesion and gene transcription. In humans, the CTNNB1 protein is encoded by the CTNNB1 gene. In Drosophila, the homologous protein is called armadillo. Beta catenin is a subunit of the cadherin protein complex and acts as an intracellular signal transducer in the Wnt signaling pathway. It is a member of the catenin protein family and homologous to gamma-Catenin, also known as plakoglobin. Beta-Catenin is widely expressed in many tissues. In cardiac muscle, it localizes to adherens junctions in intercalated disc structures, which are critical for electrical and mechanical coupling between adjacent cardiomyocyte. [Wiki]

Application Notes

Optimal dilution of the Beta Catenin antibody to be determined by the researcher.

Immunogen

A C-terminal 100 amino acid segment from chicken beta-Catenin was used as the immunogen for the Beta Catenin antibody.

Storage

Store the Beta Catenin antibody at 2-8oC (with azide) or aliquot and store at -20oC or colder (without azide).

