

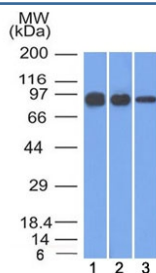
## Beta Catenin Antibody [clone 12F7] (V3209)

Catalog No.	Formulation	Size
V3209-100UG	0.2 mg/ml in 1X PBS with 0.1 mg/ml BSA (US sourced) and 0.05% sodium azide	100 ug
V3209-20UG	0.2 mg/ml in 1X PBS with 0.1 mg/ml BSA (US sourced) and 0.05% sodium azide	20 ug
V3209SAF-100UG	1 mg/ml in 1X PBS; BSA free, sodium azide free	100 ug

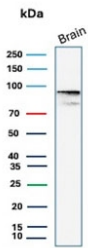
 Citations (8)

[Bulk quote request](#)

<b>Availability</b>	1-3 business days
<b>Species Reactivity</b>	Human, Mouse, Rat
<b>Format</b>	Purified
<b>Host</b>	Mouse
<b>Clonality</b>	Monoclonal (mouse origin)
<b>Isotype</b>	Mouse IgG1, kappa
<b>Clone Name</b>	12F7
<b>Purity</b>	Protein G affinity chromatography
<b>UniProt</b>	P35222
<b>Localization</b>	Cell surface, cytoplasmic, cell junctions
<b>Applications</b>	Flow Cytometry : 0.5-1ug/10 <sup>6</sup> cells Immunofluorescence : 1-2ug/ml Western Blot : 0.5-1ug/ml
<b>Limitations</b>	This Beta Catenin antibody is available for research use only.



Western blot testing of human 1) A431, 2) A549 and 3) MCF7 cell lysate with Beta Catenin antibody (clone 12F7). Predicted molecular weight ~85 kDa, but routinely observed at 90-95 kDa.



Western blot testing of human brain tissue lysate with Beta Catenin antibody (clone 12F7). Predicted molecular weight ~85 kDa, but routinely observed at 90-95 kDa.

## Description

The protein encoded by this gene is part of a complex of proteins that constitute adherens junctions (AJs). AJs are necessary for the creation and maintenance of epithelial cell layers by regulating cell growth and adhesion between cells. The encoded protein also anchors the actin cytoskeleton and may be responsible for transmitting the contact inhibition signal that causes cells to stop dividing once the epithelial sheet is complete. Finally, this protein binds to the product of the APC gene, which is mutated in adenomatous polyposis of the colon. Mutations in this gene are a cause of colorectal cancer (CRC), pilomatixoma (PTR), medulloblastoma (MDB), and ovarian cancer. [RefSeq]

## Application Notes

Titration of the Beta Catenin antibody may be required due to differences in protocols and secondary/substrate sensitivity.

## Immunogen

A recombinant fusion protein consisting of the N-terminal half of human beta-Catenin fused to maltose binding protein was used as the immunogen for the Beta Catenin antibody.

## Storage

Store the Beta Catenin antibody at 2-8oC (with azide) or aliquot and store at -20oC or colder (without azide).