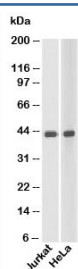


Beta Actin Antibody Loading Control (N1037)

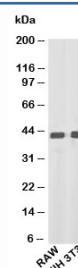
Catalog No.	Formulation	Size
N1037-100UG	0.5 mg/ml in 1X PBS with 0.1 mg/ml BSA (US sourced), 0.05% sodium azide	100 ug
N1037-25UG	0.5 mg/ml in 1X PBS with 0.1 mg/ml BSA (US sourced), 0.05% sodium azide	25 ug

[Bulk quote request](#)

Species Reactivity	Human, Mouse, Rat, Monkey, Rabbit, Chicken, Dog
Format	Purified
Host	Rabbit
Clonality	Polyclonal (rabbit origin)
Isotype	Rabbit IgG
Purity	Protein A Affinity Chromatography
Buffer	1X PBS, pH 7.4
Gene ID	60
Applications	Western Blot : 1-3ug/ml
Limitations	This beta Actin antibody loading control is available for research use only.



Western blot testing of human samples with beta Actin antibody at 1 ug/ml.



Western blot testing of mouse samples with beta Actin antibody at 1 ug/ml.

Description

Actins proteins are highly conserved and involved in cellular structure, integrity and motility. There are three main isoforms of actin in vertebrates: alpha, beta and gamma. Alpha actins are found in muscle cells while beta and gamma actins are non-muscle actins. Beta actin is commonly used as a loading control protein in western blot. An antibody to beta actin is used to demonstrate equivalent protein loading in different gel lanes, typically transfected vs mock or non transfected cell lysate.

Application Notes

Provided assay concentrations are suggestions only, beta Actin antibody titration may be required for optimal results.

Immunogen

A recombinant protein fragment from the N-terminus of human beta Actin was used as the immunogen for this antibody.

Storage

Aliquot the loading control antibody and store frozen at -20oC or colder to avoid repeated freeze-thaw cycles.

Alternate Names

Actin, WB loading control