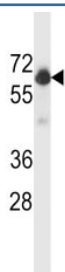


BECN1 Antibody (F43262)

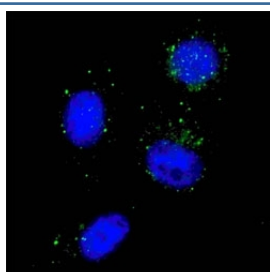
Catalog No.	Formulation	Size
F43262-0.4ML	In 1X PBS, pH 7.4, with 0.09% sodium azide	0.4 ml
F43262-0.08ML	In 1X PBS, pH 7.4, with 0.09% sodium azide	0.08 ml

[Bulk quote request](#)

Availability	1-3 business days
Species Reactivity	Human
Predicted Reactivity	Bovine, Chicken, Mouse, Pig, Rat, Xenopus
Format	Antigen affinity purified
Host	Rabbit
Clonality	Polyclonal (rabbit origin)
Isotype	Rabbit Ig
Purity	Antigen affinity
UniProt	Q14457
Applications	Immunofluorescence : 1:100 Western Blot : 1:1000
Limitations	This BECN1 antibody is available for research use only.



BECN1 antibody western blot analysis in WiDr lysate



Fluorescent image of U251 cells stained with BECN1 antibody at 1:100.
Immunoreactivity is localized to autophagic vacuoles in the cytoplasm.

Description

Beclin-1 participates in the regulation of autophagy and has an important role in development, tumorigenesis, and neurodegeneration. [supplied by OMIM].

Application Notes

Titration of the BECN1 antibody may be required due to differences in protocols and secondary/substrate sensitivity.

Immunogen

A portion of amino acids 100-123 from the human protein was used as the immunogen for this BECN1 antibody.

Storage

Aliquot the BECN1 antibody and store frozen at -20oC or colder. Avoid repeated freeze-thaw cycles.