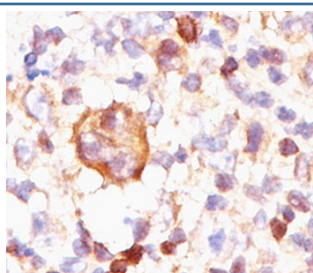


Bcl-X Antibody [clone BX006] (V2011)

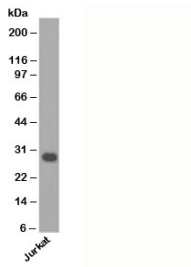
Catalog No.	Formulation	Size
V2011-100UG	0.2 mg/ml in 1X PBS with 0.1 mg/ml BSA (US sourced) and 0.05% sodium azide	100 ug
V2011-20UG	0.2 mg/ml in 1X PBS with 0.1 mg/ml BSA (US sourced) and 0.05% sodium azide	20 ug
V2011SAF-100UG	1 mg/ml in 1X PBS; BSA free, sodium azide free	100 ug
V2011IHC-7ML	Prediluted in 1X PBS with 0.1 mg/ml BSA (US sourced) and 0.05% sodium azide; *For IHC use only*	7 ml

[Bulk quote request](#)

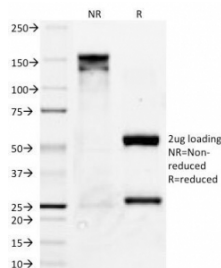
Species Reactivity	Human, Mouse, Rat
Format	Purified
Host	Mouse
Clonality	Monoclonal (mouse origin)
Isotype	Mouse IgG2a, kappa
Clone Name	BX006
Purity	Protein G affinity chromatography
Buffer	1X PBS, pH 7.4
Gene ID	598
Localization	Cytoplasmic and cell/nuclear membrane
Applications	Western Blot : 0.5-1ug/ml Immunohistochemistry (FFPE) : 0.5-1ug/ml for 30 min at RT
Limitations	This Bcl-X antibody is available for research use only.



IHC testing of Hodgkin's lymphoma stained with Bcl-X antibody (BX006). Note cytoplasmic and membrane staining.



Western blot testing of human samples.



SDS-PAGE Analysis of Purified, BSA-Free Bcl-X Antibody (clone BX006). Confirmation of Integrity and Purity of the Antibody.

Description

This antibody recognizes a protein of 27kDa, identified as Bcl-X. The mAb shows no cross-reaction with Bcl2 alpha or Bax. Bcl-X has two isoforms, XL (long), a 241 amino acid protein which suppresses cell death, and XS (short), a 178 amino acid protein lacking a 63 amino acid domain which functions as a dominant inhibitor of Bcl2.

Application Notes

The concentration stated for each application is a general starting point. Variations in protocols, secondaries and substrates may require the Bcl-X antibody to be titrated up or down for optimal performance.

1. Staining of formalin-fixed tissues requires boiling tissue sections in 1mM EDTA buffer, pH 7.5-8.5, for 10-20 min followed by cooling at RT for 20 minutes.
2. This antibody reacts with both BclXS and BclXL.
3. The prediluted format is supplied in a dropper bottle and is optimized for use in IHC. After epitope retrieval step (if required), drip mAb solution onto the tissue section and incubate at RT for 30 min.

Immunogen

Amino acids QSNRELVDFLS (3-14) of the human protein were used as the immunogen for this Bcl-X antibody (2).

Storage

Store the Bcl-X antibody at 2-8°C (with azide) or aliquot and store at -20°C or colder (without azide).

Alternate Names

B cell lymphoma 2 like, BclXL, BclXS

References (3)

