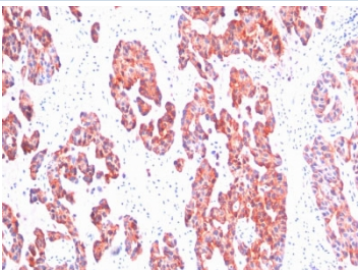


## Basic Cytokeratin Antibody [clone SPM116] (V7399)

Catalog No.	Formulation	Size
V7399-100UG	0.2 mg/ml in 1X PBS with 0.1 mg/ml BSA (US sourced) and 0.05% sodium azide	100 ug
V7399-20UG	0.2 mg/ml in 1X PBS with 0.1 mg/ml BSA (US sourced) and 0.05% sodium azide	20 ug
V7399SAF-100UG	1 mg/ml in 1X PBS; BSA free, sodium azide free	100 ug
V7399IHC-7ML	Prediluted in 1X PBS with 0.1 mg/ml BSA (US sourced) and 0.05% sodium azide; *For IHC use only*	7 ml

[Bulk quote request](#)

<b>Species Reactivity</b>	Human
<b>Format</b>	Purified
<b>Host</b>	Mouse
<b>Clonality</b>	Monoclonal (mouse origin)
<b>Isotype</b>	Mouse IgG1
<b>Clone Name</b>	SPM116
<b>Purity</b>	Protein G purified
<b>UniProt</b>	Q01546
<b>Localization</b>	Cytoplasmic
<b>Applications</b>	Immunohistochemistry (FFPE) : 1-2ug/ml for 30 min at RT Prediluted IHC Only Format : incubate for 30 min at RT (1)
<b>Limitations</b>	This Basic Cytokeratin antibody is available for research use only.



IHC staining of FFPE human breast carcinoma with Basic Cytokeratin antibody (clone SPM116). HIER: boil tissue sections in pH 9 10mM Tris with 1mM EDTA for 10-20 min and allow to cool before testing.

## Description

This MAb recognizes basic (Type II or HMW) cytokeratins, which include 67kDa (CK1); 64kDa (CK3); 59kDa (CK4); 58kDa (CK5); 56kDa (CK6); 52kDa (CK8). Twenty human keratins are resolved with two-dimensional gel electrophoresis into acidic (pI 6.0) subfamilies. The acidic keratins have molecular weights (MW) of 56.5, 55, 51, 50, 50, 48, 46, 45, and 40kDa. This MAb recognizes the 65-67, 64, 59, 58, 56, and 52kDa keratins of basic subfamily. Many studies have shown the usefulness of keratins as markers in cancer research and tumor diagnosis. SPM115/SPM116 is a broad spectrum anti pan-keratin antibody cocktail, which differentiates epithelial tumors from non-epithelial tumors e.g. squamous vs. adenocarcinoma of the lung, liver carcinoma, breast cancer, and esophageal cancer.

## Application Notes

Differences in protocols and secondaries may cause the Basic Cytokeratin antibody to need titering for optimal performance.

1. The prediluted format is supplied in a dropper bottle and is optimized for use in IHC. After epitope retrieval step (if required), drip mAb solution onto the tissue section and incubate at RT for 30 min.

## Immunogen

Solubilized cytokeratin extract from human stratum corneum was used as the immunogen.

## Storage

Store the Basic Cytokeratin antibody at 2-8oC (with azide) or aliquot and store at -20oC or colder (without azide).

## References (2)