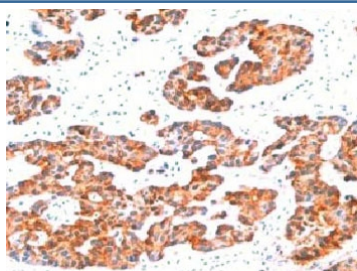


Basic Cytokeratin Antibody [clone BCCK1-1] (V7099)

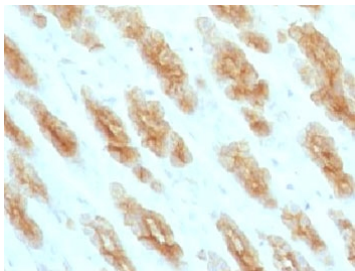
Catalog No.	Formulation	Size
V7099-100UG	0.2 mg/ml in 1X PBS with 0.1 mg/ml BSA (US sourced) and 0.05% sodium azide	100 ug
V7099-20UG	0.2 mg/ml in 1X PBS with 0.1 mg/ml BSA (US sourced) and 0.05% sodium azide	20 ug
V7099SAF-100UG	1 mg/ml in 1X PBS; BSA free, sodium azide free	100 ug
V7099IHC-7ML	Prediluted in 1X PBS with 0.1 mg/ml BSA (US sourced) and 0.05% sodium azide; *For IHC use only*	7 ml

[Bulk quote request](#)

Availability	1-3 business days
Species Reactivity	Human, Rat. Broad species reactivity expected.
Format	Purified
Host	Mouse
Clonality	Monoclonal (mouse origin)
Isotype	Mouse IgG1, kappa
Clone Name	BCCK1-1
Purity	Protein G affinity chromatography
UniProt	Q01546
Localization	Cytoplasmic
Applications	Immunohistochemistry (FFPE) : 0.5-1ug/ml for 30 min at RT (1) Prediluted IHC Only Format : incubate for 30 min at RT (2)
Limitations	This Basic Cytokeratin antibody is available for research use only.



IHC testing of FFPE human breast carcinoma with Basic Cytokeratin antibody.



IHC testing of FFPE rat stomach with Basic Cytokeratin antibody.

Description

There are two types of cytokeratins/keratins/CKs: the acidic type I cytokeratins and the basic or neutral type II cytokeratins. The subsets of cytokeratins which an epithelial cell expresses depends mainly on the type of epithelium, the moment in the course of terminal differentiation and the stage of development. Thus this specific keratin fingerprint allows the classification of all epithelia upon their keratin expression profile. Furthermore this applies also to the malignant counterparts of the epithelia (carcinomas), as the keratin profile tends to remain constant when an epithelium undergoes malignant transformation. The main clinical implication is that the study of the keratin profile by immunohistochemistry techniques is a tool of immense value widely used for tumor diagnosis and characterization in surgical pathology. [Wiki]

Application Notes

Titering of the Basic Cytokeratin antibody may be required for optimal performance.

1. FFPE testing requires sections to be boiled in pH6 10mM citrate buffer for 10-20 minutes, followed by cooling at RT for 20 minutes, prior to staining.
2. The prediluted format is supplied in a dropper bottle and is optimized for use in IHC. After epitope retrieval step (if required), drip mAb solution onto the tissue section and incubate at RT for 30 min.
3. This Basic Cytokeratin antibody detects the following keratins/CKs: CK1 (67kDa), CK3 (64kDa), CK4 (59kDa), CK5 (58 kDa), CK6 (56kDa), CK8 (52 kDa).

Immunogen

An amino acid sequence common to basic keratins was used as the immunogen for the Basic Cytokeratin antibody.

Storage

Store the Basic Cytokeratin antibody at 2-8oC (with azide) or aliquot and store at -20oC or colder (without azide).