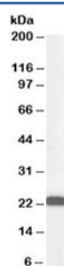


BAG2 Antibody (R33338)

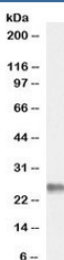
Catalog No.	Formulation	Size
R33338-100UG	0.5 mg/ml in 1X TBS, pH7.3, with 0.5% BSA (US sourced) and 0.02% sodium azide	100 ug

[Bulk quote request](#)

Availability	1-3 business days
Species Reactivity	Human, Pig
Predicted Reactivity	Cow
Format	Antigen affinity purified
Clonality	Polyclonal (goat origin)
Isotype	Goat Ig
Purity	Antigen affinity
Gene ID	9532
Applications	Western Blot : 0.1-0.3ug/ml ELISA (peptide) LOD : 1:8000
Limitations	This BAG2 antibody is available for research use only.



Western blot testing of HeLa lysate with BAG2 antibody at 0.3ug/ml. Predicted molecular weight: ~22kDa.



Western blot testing of pig testis lysate with BAG2 antibody at 0.3ug/ml. Predicted molecular weight: ~22kDa.

Description

Additional name(s) for this target protein: BCL2-associated athanogene 2

Application Notes

Optimal dilution of the BAG2 antibody should be determined by the researcher.

Immunogen

Amino acids CSKTLQQNAESRFN were used as the immunogen for this BAG2 antibody.

Storage

Aliquot and store the BAG2 antibody at -20oC.