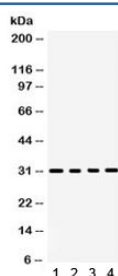


BAFF Antibody (R32360)

Catalog No.	Formulation	Size
R32360	0.5mg/ml if reconstituted with 0.2ml sterile DI water	100 ug

Bulk quote request

Availability	1-3 business days
Species Reactivity	Human, Mouse, Rat
Format	Antigen affinity purified
Host	Rabbit
Clonality	Polyclonal (rabbit origin)
Isotype	Rabbit IgG
Purity	Antigen affinity
Buffer	Lyophilized from 1X PBS with 2.5% BSA and 0.025% sodium azide
UniProt	Q9Y275
Applications	Western Blot : 0.1-0.5ug/ml
Limitations	This BAFF antibody is available for research use only.



Western blot testing of 1) rat kidney, 2) rat spleen, 3) mouse spleen and 4) human placenta lysate with BAFF antibody. Expected/observed molecular weight ~31 kDa.

Description

BAFF was regularly detected by enzyme-linked immunosorbent assay in brain tissue lysates and in normal spinal fluid, and in astrocytes by double fluorescence microscopy. BAFF was localized in astrocytes close to BAFF-R-expressing immune cells. BAFF receptors were strongly expressed in situ in primary central nervous system (CNS) lymphomas. The TNF superfamily member B cell-activating factor (BAFF) plays an important role in humoral immunity and in autoimmune diseases, including RA. Local BAFF gene targeting inhibited proinflammatory cytokine expression, suppressed generation of plasma cells and Th17 cells, and markedly ameliorated joint pathology. The B cell activating factor BAFF (BlyS/TALL-1/zTNF4) is a tumor necrosis factor (TNF)-related ligand that promotes B cell survival and binds to three

receptors (BCMA, TACI, and the recently described BAFF-R). Human BAFF was mapped to chromosome 13q32-34. The standard used in this kit is recombinant soluble human BAFF (A134-L295) with the molecular mass of 19.6KDa.

Application Notes

Optimal dilution of the BAFF antibody should be determined by the researcher.

Immunogen

Amino acids 134-285 of human BAFF were used as the immunogen for the BAFF antibody.

Storage

After reconstitution, the BAFF antibody can be stored for up to one month at 4°C. For long-term, aliquot and store at -20°C. Avoid repeated freezing and thawing.