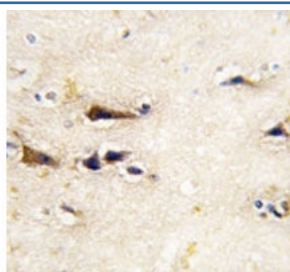


BACE1 Antibody (F50758)

Catalog No.	Formulation	Size
F50758-0.4ML	In 1X PBS, pH 7.4, with 0.09% sodium azide	0.4 ml
F50758-0.08ML	In 1X PBS, pH 7.4, with 0.09% sodium azide	0.08 ml

[Bulk quote request](#)

Availability	1-3 business days
Species Reactivity	Human, Mouse
Predicted Reactivity	Rat, Bovine
Format	Purified
Host	Rabbit
Clonality	Polyclonal (rabbit origin)
Isotype	Rabbit Ig
Purity	Purified
UniProt	P56817
Applications	Western Blot : 1:1000 IHC (Paraffin) : 1:10-1:50
Limitations	This BACE1 antibody is available for research use only.



IHC analysis of FFPE human brain tissue stained with BACE1 antibody



Western blot analysis of BACE1 antibody and mouse heart tissue lysate.

Description

Responsible for the proteolytic processing of the amyloid precursor protein (APP). Cleaves at the N-terminus of the A-beta peptide sequence, between residues 671 and 672 of APP, leads to the generation and extracellular release of beta-cleaved soluble APP, and a corresponding cell-associated C-terminal fragment which is later released by gamma-secretase. [UniProt]

Application Notes

The stated application concentrations are suggested starting amounts. Titration of the BACE1 antibody may be required due to differences in protocols and secondary/substrate sensitivity.

Immunogen

A portion of amino acids 38-70 from the human protein was used as the immunogen for this BACE1 antibody.

Storage

Store at 4oC for up to one month. For long term, aliquot the BACE1 antibody and store frozen at -20oC or colder. Avoid repeated freeze-thaw cycles.