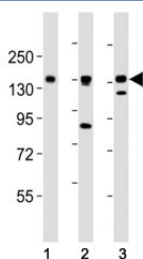


AXL Antibody (F53357)

Catalog No.	Formulation	Size
F53357-0.4ML	In 1X PBS, pH 7.4, with 0.09% sodium azide	0.4 ml
F53357-0.08ML	In 1X PBS, pH 7.4, with 0.09% sodium azide	0.08 ml

[Bulk quote request](#)

Availability	1-3 business days
Species Reactivity	Human, Rat
Format	Antigen affinity purified
Clonality	Polyclonal (rabbit origin)
Isotype	Rabbit Ig
Purity	Antigen affinity
UniProt	P30530
Applications	Western Blot : 1:2000
Limitations	This AXL antibody is available for research use only.



AXL antibody at 1:2000 dilution. Lane 1: NCI-H1299 lysate; 2: HeLa lysate; 3: L6 lysate;
Predicted molecular weight is 104 kDa unglycosylated, 120-140 kDa with glycosylation

Description

Receptor tyrosine kinase that transduces signals from the extracellular matrix into the cytoplasm by binding growth factor GAS6 and which is thus regulating many physiological processes including cell survival, cell proliferation, migration and differentiation. Ligand binding at the cell surface induces dimerization and autophosphorylation of AXL. Following activation by ligand, ALX binds and induces tyrosine phosphorylation of PI3- kinase subunits PIK3R1, PIK3R2 and PIK3R3; but also GRB2, PLCG1, LCK and PTPN11. Other downstream substrate candidates for AXL are CBL, NCK2, SOCS1 and TENC1. Recruitment of GRB2 and phosphatidylinositol 3 kinase regulatory subunits by AXL leads to the downstream activation of the AKT kinase. GAS6/AXL signaling plays a role in various processes such as endothelial cell survival during acidification by preventing apoptosis, optimal cytokine signaling during human natural killer cell

development, hepatic regeneration, gonadotropin-releasing hormone neuron survival and migration, platelet activation, or regulation of thrombotic responses. Plays also an important role in inhibition of Toll-like receptors (TLRs)-mediated innate immune response. In case of filovirus infection, seems to function as a cell entry factor. [UniProt]

Application Notes

Titration of the AXL antibody may be required due to differences in protocols and secondary/substrate sensitivity.

Immunogen

This AXL antibody was produced from a rabbit immunized with a KLH conjugated synthetic peptide between 838-872 amino acids from the C-terminal region of human AXL.

Storage

Aliquot the AXL antibody and store frozen at -20oC or colder. Avoid repeated freeze-thaw cycles.