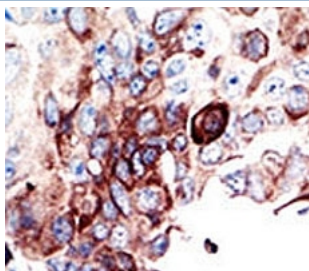


## AXL Antibody (F50553)

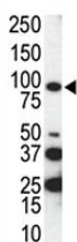
Catalog No.	Formulation	Size
F50553-0.4ML	In 1X PBS, pH 7.4, with 0.09% sodium azide	0.4 ml
F50553-0.08ML	In 1X PBS, pH 7.4, with 0.09% sodium azide	0.08 ml

[Bulk quote request](#)

<b>Availability</b>	1-3 business days
<b>Species Reactivity</b>	Human
<b>Format</b>	Purified
<b>Host</b>	Rabbit
<b>Clonality</b>	Polyclonal (rabbit origin)
<b>Isotype</b>	Rabbit Ig
<b>Purity</b>	Purified
<b>UniProt</b>	P30530
<b>Applications</b>	Western Blot : 1:1000 IHC (Paraffin) : 1:50-1:100
<b>Limitations</b>	This AXL antibody is available for research use only.



IHC analysis of FFPE human cancer tissue stained with the AXL antibody



Western blot analysis of AXL antibody and SKBR3 cell lysate. Predicted molecular weight is 104 kDa unglycosylated, 120-140 kDa with glycosylation

## Description

AXL, a member of the AXL/UFO subfamily of Tyr protein kinases, may function as a signal transducer between specific cell types of mesodermal origin. This Type I membrane protein has transforming potential in patients with chronic myeloproliferative disorder or chronic myelocytic leukemia. The protein contains 2 putative fibronectin type III domains and 2 putative immunoglobulin-like C2-type domains.

## Application Notes

Titration of the AXL antibody may be required due to differences in protocols and secondary/substrate sensitivity.

## Immunogen

A portion of amino acids 863-894 from the human protein was used as the immunogen for this AXL antibody.

## Storage

Aliquot the AXL antibody and store frozen at -20oC or colder. Avoid repeated freeze-thaw cycles.