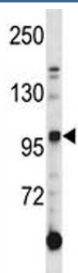


## AXL Antibody (F44438)

Catalog No.	Formulation	Size
F44438-0.4ML	In 1X PBS, pH 7.4, with 0.09% sodium azide	0.4 ml
F44438-0.08ML	In 1X PBS, pH 7.4, with 0.09% sodium azide	0.08 ml

[Bulk quote request](#)

<b>Availability</b>	1-3 business days
<b>Species Reactivity</b>	Human
<b>Format</b>	Antigen affinity purified
<b>Host</b>	Rabbit
<b>Clonality</b>	Polyclonal (rabbit origin)
<b>Isotype</b>	Rabbit Ig
<b>Purity</b>	Antigen affinity
<b>UniProt</b>	Q00993
<b>Applications</b>	Western Blot : 1:1000
<b>Limitations</b>	This AXL antibody is available for research use only.



AXL antibody western blot analysis in K562 lysate. Predicted molecular weight is 104 kDa unglycosylated, 120-140 kDa with glycosylation

### Description

AXL may function as a signal transducer between specific cell types of mesodermal origin.

### Application Notes

Titration of the AXL antibody may be required due to differences in protocols and secondary/substrate sensitivity.

### Immunogen

A portion of amino acids 122-149 from the mouse protein was used as the immunogen for this AXL antibody.

## **Storage**

Aliquot the Axl antibody and store frozen at -20oC or colder. Avoid repeated freeze-thaw cycles.