

Autotaxin Antibody / ENPP2 (F54328)

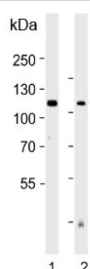
Catalog No.	Formulation	Size
F54328-0.2ML	In 1X PBS, pH 7.4, with 0.09% sodium azide	0.2 ml
F54328-0.05ML	In 1X PBS, pH 7.4, with 0.09% sodium azide	0.05 ml

[Bulk quote request](#)

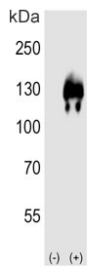
Availability	1-3 business days
Species Reactivity	Human
Format	Purified
Host	Rabbit
Clonality	Polyclonal (rabbit origin)
Isotype	Rabbit IgG
Purity	Antigen affinity purified
UniProt	Q13822
Applications	Western Blot : 1:500-1:2000 Flow Cytometry : 1:25 (1x10e6 cells)
Limitations	This Autotaxin antibody is available for research use only.



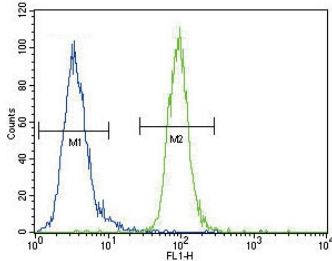
Western blot testing of human brain lysate with Autotaxin antibody. Expected molecular weight: 99-125 kDa depending on glycosylation level.



Western blot testing of human 1) placenta and 2) plasma lysate with Autotaxin antibody. Expected molecular weight: 99-125 kDa depending on glycosylation level.



Western blot testing of 1) non-transfected and 2) transfected 293T cell lysate with Autotaxin antibody. Expected molecular weight: 99-125 kDa depending on glycosylation level.



Flow cytometry testing of human MDA-MB-435 cells with Autotaxin antibody; Blue=isotype control, Green= Autotaxin antibody.

Description

ENPP2 functions as both a phosphodiesterase, which cleaves phosphodiester bonds at the 5' end of oligonucleotides, and a phospholipase, which catalyzes production of lysophosphatidic acid (LPA) in extracellular fluids. LPA evokes growth factor-like responses including stimulation of cell proliferation and chemotaxis. This protein stimulates the motility of tumor cells and has angiogenic properties, and its expression is upregulated in several kinds of carcinomas. The protein is secreted and further processed to make the biologically active form.

Application Notes

The stated application concentrations are suggested starting points. Titration of the Autotaxin antibody may be required due to differences in protocols and secondary/substrate sensitivity.

Immunogen

A portion of amino acids 377-406 from the human protein was used as the immunogen for the Autotaxin antibody.

Storage

Aliquot the Autotaxin antibody and store frozen at -20oC or colder. Avoid repeated freeze-thaw cycles.