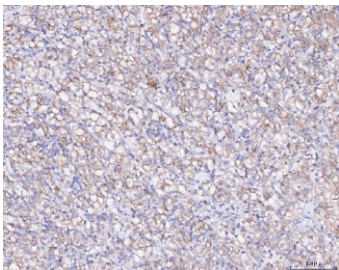


## ATX2 Antibody (R32313)

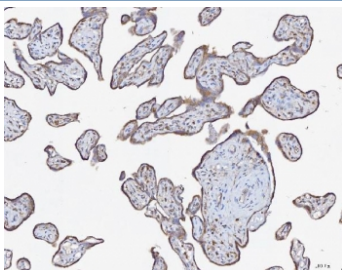
Catalog No.	Formulation	Size
R32313	0.5mg/ml if reconstituted with 0.2ml sterile DI water	100 ug

[Bulk quote request](#)

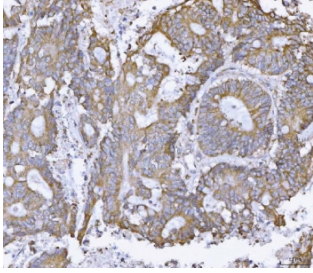
<b>Availability</b>	1-3 business days
<b>Species Reactivity</b>	Human, Mouse, Rat
<b>Format</b>	Antigen affinity purified
<b>Host</b>	Rabbit
<b>Clonality</b>	Polyclonal (rabbit origin)
<b>Isotype</b>	Rabbit IgG
<b>Purity</b>	Antigen affinity
<b>Buffer</b>	Lyophilized from 1X PBS with 2% Trehalose
<b>UniProt</b>	Q99700
<b>Localization</b>	Cytoplasmic
<b>Applications</b>	Western Blot : 0.5-1ug/ml Immunohistochemistry (FFPE) : 2-5ug/ml
<b>Limitations</b>	This ATX2 antibody is available for research use only.



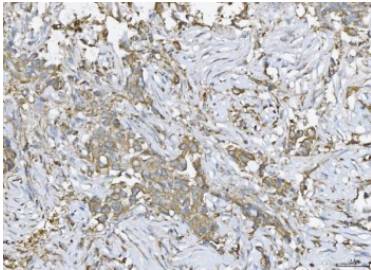
IHC staining of FFPE human glioma tissue with ATX2 antibody. HIER: boil tissue sections in pH8 EDTA for 20 min and allow to cool before testing.



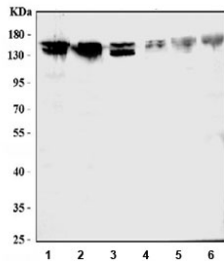
IHC staining of FFPE human placenta tissue with ATX2 antibody. HIER: boil tissue sections in pH8 EDTA for 20 min and allow to cool before testing.



IHC staining of FFPE human colonic adenoma cancer tissue with ATX2 antibody. HIER: boil tissue sections in pH8 EDTA for 20 min and allow to cool before testing.



IHC staining of FFPE human breast cancer tissue with ATX2 antibody. HIER: boil tissue sections in pH8 EDTA for 20 min and allow to cool before testing.



Western blot testing of human 1) HeLa, 2) K562, 3) A549, 4) rat brain, 5) mouse brain, and 6) mouse liver tissue lysate with ATX2 antibody. Expected molecular weight: 114~140 kDa.

## Description

Ataxin-2, or ATX2, protein is encoded by the ATXN2 gene and contains a polyglutamine tract, long expansions (greater than 33 repeats) of which result in spinocerebellar ataxia-2 (SCA2), an autosomal dominant form of olivopontocerebellar atrophy. The gene for spinocerebellar ataxia type 2 (SCA2) has been mapped to 12q24.1. Ataxin-2 associates with L- and T-plastin and that overexpression of ataxin-2 leads to accumulation of T-plastin in mammalian cells.

## Application Notes

Optimal dilution of the ATX2 antibody should be determined by the researcher.

## Immunogen

Amino acids QSALQPIPVSTTAHFPYMTHTPSVQAHHQQQL of human ATXN2 were used as the immunogen for the ATX2 antibody.

## Storage

After reconstitution, the ATX2 antibody can be stored for up to one month at 4°C. For long-term, aliquot and store at -20°C. Avoid repeated freezing and thawing.

