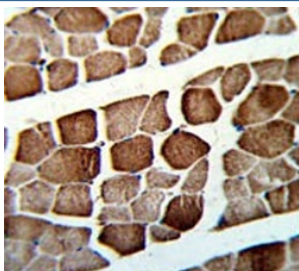


ATP5O Antibody (F54457)

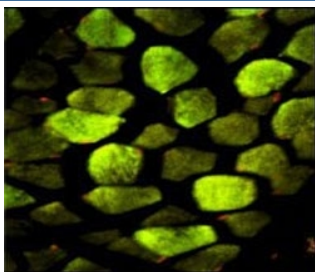
Catalog No.	Formulation	Size
F54457-0.4ML	In 1X PBS, pH 7.4, with 0.09% sodium azide	0.4 ml
F54457-0.08ML	In 1X PBS, pH 7.4, with 0.09% sodium azide	0.08 ml

Bulk quote request

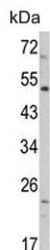
Availability	1-3 business days
Species Reactivity	Human
Format	Purified
Host	Rabbit
Clonality	Polyclonal (rabbit origin)
Isotype	Rabbit Ig
Purity	Antigen affinity purified
UniProt	P48047
Localization	Cytoplasmic
Applications	Western Blot : 1:500-1:2000 Flow Cytometry : 1:25 (1x10e6 cells) Immunofluorescence : 1:25 Immunohistochemistry (FFPE) : 1:25
Limitations	This ATP5O antibody is available for research use only.



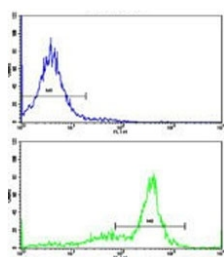
IHC testing of FFPE human skeletal muscle tissue with ATP5O antibody. HIER: steam section in pH6 citrate buffer for 20 min and allow to cool prior to staining.



Immunofluorescent staining of FFPE human skeletal muscle with ATP5O antibody.



Western blot testing of human HEK293 cell lysate with ATP5O antibody. Predicted molecular weight ~23 kDa.



Flow cytometry testing of human HEK293 cells with ATP5O antibody; Blue=isotype control, Green= ATP5O antibody.

Description

ATP5O is a component of the F-type ATPase found in the mitochondrial matrix. F-type ATPases are composed of a catalytic core and a membrane proton channel. This protein appears to be part of the connector linking these two components and may be involved in transmission of conformational changes or proton conductance.

Application Notes

The stated application concentrations are suggested starting points. Titration of the ATP5O antibody may be required due to differences in protocols and secondary/substrate sensitivity.

Immunogen

A portion of amino acids 38-64 from the human protein was used as the immunogen for the ATP5O antibody.

Storage

Aliquot the ATP5O antibody and store frozen at -20oC or colder. Avoid repeated freeze-thaw cycles.

