

## ATP2A2 Antibody (R30156)

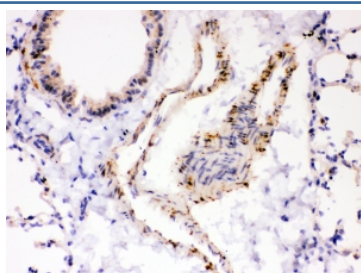
Catalog No.	Formulation	Size
R30156	0.5mg/ml if reconstituted with 0.2ml sterile DI water	100 ug

**Bulk quote request**

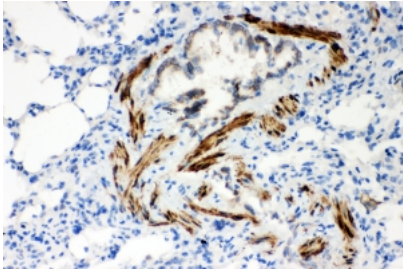
<b>Availability</b>	1-3 business days
<b>Species Reactivity</b>	Human, Mouse, Rat
<b>Format</b>	Antigen affinity purified
<b>Host</b>	Rabbit
<b>Clonality</b>	Polyclonal (rabbit origin)
<b>Isotype</b>	Rabbit IgG
<b>Purity</b>	Antigen affinity
<b>Buffer</b>	Lyophilized from 1X PBS with 2% Trehalose
<b>Gene ID</b>	488
<b>Applications</b>	Western Blot : 0.5-1ug/ml Immunohistochemistry (FFPE) : 0.5-1ug/ml
<b>Limitations</b>	This ATP2A2 antibody is available for research use only.



Western blot testing of ATP2A2 antibody and Lane 1: rat skeletal muscle; 2: mouse skeletal muscle; Expected molecular weight ~115 kDa.



IHC-P: ATP2A2 antibody testing of mouse lung tissue



IHC-P: ATP2A2 antibody testing of rat lung tissue

## Description

SERCA2, also called ATP2A2 or ATP2B, encodes one of the SERCA Ca(2+)-ATPases, which are intracellular pumps located in the sarcoplasmic or endoplasmic reticula of muscle cells. They are closely related to the plasma membrane Ca(2+)-ATPases, or PMCA. SERCA2 belongs to the large family of P-type cation pumps that couple ATP hydrolysis with cation transport across membranes. The SERCA2 gene is mapped to 12q24.11. SERCA2 was expressed in all specimens, with pronounced expression in the subnuclear aspect of basal epidermal keratinocytes. There was variable suprabasal expression. SERCA2 expression was also observed in the infundibulum and outer root sheath of hair follicles; germinative and mature cells of sebaceous glands; secretory coil and duct of eccrine glands; apocrine gland cells; and arrector pili muscle. In Darier disease skin, strong SERCA2 positivity was detected in the basal, suprabasal, and acantholytic lesional cells.

## Application Notes

The stated application concentrations are suggested starting amounts. Titration of the ATP2A2 antibody may be required due to differences in protocols and secondary/substrate sensitivity.

## Immunogen

An amino acid sequence from the N-terminus of human ATP2A2 (MENAHTKTVEEV LGHFGVNESTGLSLEQVKKL) was used as the immunogen for this ATP2A2 antibody.

## Storage

After reconstitution, the ATP2A2 antibody can be stored for up to one month at 4°C. For long-term, aliquot and store at -20°C. Avoid repeated freezing and thawing.