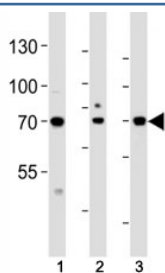


ATF6 beta Antibody (F49022)

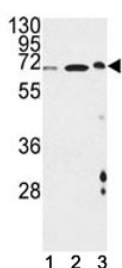
Catalog No.	Formulation	Size
F49022-0.4ML	In 1X PBS, pH 7.4, with 0.09% sodium azide	0.4 ml
F49022-0.08ML	In 1X PBS, pH 7.4, with 0.09% sodium azide	0.08 ml

[Bulk quote request](#)

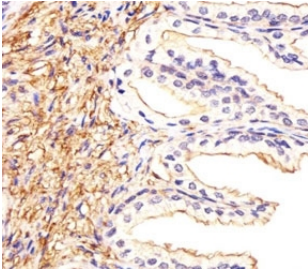
Availability	1-3 business days
Species Reactivity	Human, Hamster, Mouse
Format	Antigen affinity purified
Host	Rabbit
Clonality	Polyclonal (rabbit origin)
Isotype	Rabbit Ig
Purity	Antigen affinity
UniProt	Q99941
Applications	IHC (Paraffin) : 1:25 Western Blot : 1:1000
Limitations	This ATF6 beta antibody is available for research use only.



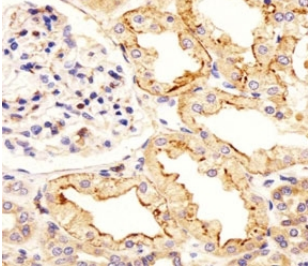
Western blot analysis of lysate from (1) HeLa, (2) HepG2 and (3) human placenta tissue lysate using ATF6 beta antibody at 1:1000. Predicted molecular weight: 75~90kDa.



ATF6 beta antibody western blot analysis in (1) mouse NIH3T3, (2) hamster CHO and (3) mouse cerebellum lysate



Immunohistochemical analysis of paraffin-embedded human prostate section using ATF6 beta antibody at 1:25.



Immunohistochemical analysis of paraffin-embedded human kidney section using ATF6 beta antibody at 1:25.

Description

ATF6 beta is a transcription factor in the unfolded protein response (UPR) pathway during ER stress. Either as a homodimer or as a heterodimer with ATF6-alpha, the encoded protein binds to the ER stress response element, interacting with nuclear transcription factor Y to activate UPR target genes. The protein is normally found in the membrane of the endoplasmic reticulum; however, under ER stress, the N-terminal cytoplasmic domain is cleaved from the rest of the protein and translocates to the nucleus.

Application Notes

Titration of the ATF6 beta antibody may be required due to differences in protocols and secondary/substrate sensitivity.

Immunogen

A portion of amino acids 560-589 from the human protein was used as the immunogen for this ATF6 beta antibody.

Storage

Aliquot the ATF6 beta antibody and store frozen at -20oC or colder. Avoid repeated freeze-thaw cycles.