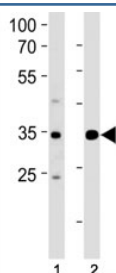


ATF4 Antibody (F42021)

| Catalog No. | Formulation | Size |
|---------------|--|---------|
| F42021-0.4ML | In 1X PBS, pH 7.4, with 0.09% sodium azide | 0.4 ml |
| F42021-0.08ML | In 1X PBS, pH 7.4, with 0.09% sodium azide | 0.08 ml |

[Bulk quote request](#)

| | |
|---------------------------|--|
| Availability | 1-3 business days |
| Species Reactivity | Human |
| Format | Antigen affinity purified |
| Clonality | Polyclonal (rabbit origin) |
| Isotype | Rabbit Ig |
| Purity | Antigen affinity |
| UniProt | P18848 |
| Applications | Western Blot : 1:1000 |
| Limitations | This ATF4 antibody is available for research use only. |



ATF4 antibody western blot analysis in (1) Jurkat and (2) MCF-7 lysate. Predicted molecular weight ~39kDa.

Description

ATF4 is a transcriptional activator that binds the cAMP response element (CRE) (consensus: 5'-GTGACGT[AC][AG]-3'), a sequence present in many viral and cellular promoters. Cooperates with FOXO1 in osteoblasts to regulate glucose homeostasis through suppression of beta-cell production and decrease in insulin production (By similarity). It binds to a Tax-responsive enhancer element in the long terminal repeat of HTLV-I. Regulates the induction of DDIT3/CHOP and asparagine synthetase (ASNS) in response to ER stress. In concert with DDIT3/CHOP, activates the transcription of TRIB3 and promotes ER stress-induced neuronal apoptosis by regulating the transcriptional induction of BBC3/PUMA. Activates transcription of SIRT4. Regulates the circadian expression of the core clock component PER2 and the serotonin transporter SLC6A4. Binds in a circadian time-dependent manner to the cAMP response elements (CRE) in the SLC6A4

and PER2 promoters and periodically activates the transcription of these genes. [UniProt]

Application Notes

Titration of the ATF4 antibody may be required due to differences in protocols and secondary/substrate sensitivity.

Immunogen

A portion of amino acids 171-198 from the human protein was used as the immunogen for this ATF4 antibody.

Storage

Aliquot the ATF4 antibody and store frozen at -20oC or colder. Avoid repeated freeze-thaw cycles.