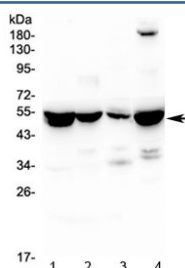


ASL Antibody / Adenylosuccinate Lyase (R32857)

Catalog No.	Formulation	Size
R32857	0.5mg/ml if reconstituted with 0.2ml sterile DI water	100 ug

Bulk quote request

Availability	1-3 business days
Species Reactivity	Human, Mouse, Rat
Format	Antigen affinity purified
Host	Rabbit
Clonality	Polyclonal (rabbit origin)
Isotype	Rabbit IgG
Purity	Antigen affinity
Buffer	Lyophilized from 1X PBS with 2.5% BSA, 0.025% sodium azide
UniProt	P04424
Localization	Cytoplasmic
Applications	Western Blot : 0.5-1ug/ml
Limitations	This ASL antibody is available for research use only.



Western blot testing of 1) rat liver, 2) rat kidney, 3) rat lung and 4) mouse liver lysate with ASL antibody at 0.5ug/ml. Predicted molecular weight ~52 kDa.

Description

ASL (argininosuccinate lyase, also known as argininosuccinase) is an enzyme that catalyzes the reversible breakdown of argininosuccinate (ASA) producing the amino acid arginine and dicarboxylic acid fumarate. Located in liver cytosol, ASL is the fourth enzyme of the urea cycle and involved in the biosynthesis of arginine in all species and the production of urea in ureotelic species. Mutations in ASL, resulting low activity of the enzyme, increase levels of urea in the body and result in various side effects. The ASL gene is located on chromosome 7 between the centromere (junction of the long

and short arm) and the long (q) arm at position 11.2, from base pair 64,984,963 to base pair 65,002,090.

Application Notes

Optimal dilution of the ASL antibody should be determined by the researcher.

Immunogen

Amino acids YTHLQRAQPIRWSHWILSHAVALTRDSERLLEVRKRIN were used as the immunogen for the ASL antibody.

Storage

After reconstitution, the ASL antibody can be stored for up to one month at 4°C. For long-term, aliquot and store at -20°C. Avoid repeated freezing and thawing.