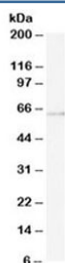


## ARIH1 Antibody (R34173)

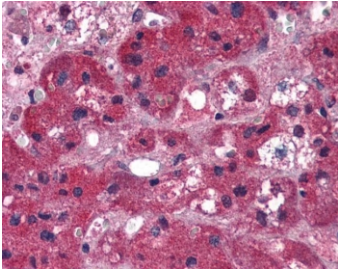
Catalog No.	Formulation	Size
R34173-100UG	0.5 mg/ml in 1X TBS, pH7.3, with 0.5% BSA (US sourced) and 0.02% sodium azide	100 ug

[Bulk quote request](#)

Availability	1-3 business days
Species Reactivity	Human
Predicted Reactivity	Mouse, Cow
Format	Antigen affinity purified
Clonality	Polyclonal (goat origin)
Isotype	Goat Ig
Purity	Antigen affinity
Gene ID	25820
Localization	Cytoplasmic, nuclear
Applications	Western Blot : 0.2-1ug/ml IHC (FFPE) : 5ug/ml ELISA (peptide) LOD : 1:32000
Limitations	This ARIH1 antibody is available for research use only.



Western blot testing of U937 lysate with ARIH1 antibody at 0.5ug/ml. Predicted molecular weight: ~61 kDa.



IHC testing of FFPE human adrenal gland tissue with ARIH1 antibody at 5ug/ml.  
Required HIER: steamed antigen retrieval with pH6 citrate buffer; AP-staining.

## Description

Additional name(s) for this target protein: HHARI, ARI, HARI, UBCH7BP

## Application Notes

Optimal dilution of the ARIH1 antibody should be determined by the researcher.

## Immunogen

Amino acids HEGYEKDLWEYIED were used as the immunogen for this ARIH1 antibody.

## Storage

Aliquot and store the ARIH1 antibody at -20oC.