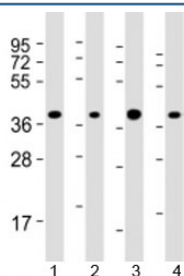


## ARHGEF39 Antibody / C9orf100 (F53843)

Catalog No.	Formulation	Size
F53843-0.2ML	In 1X PBS, pH 7.4, with 0.09% sodium azide	0.2 ml
F53843-0.05ML	In 1X PBS, pH 7.4, with 0.09% sodium azide	0.05 ml

[Bulk quote request](#)

<b>Availability</b>	1-3 business days
<b>Species Reactivity</b>	Human
<b>Format</b>	Antigen affinity purified
<b>Host</b>	Rabbit
<b>Clonality</b>	Polyclonal (rabbit origin)
<b>Isotype</b>	Rabbit Ig
<b>Purity</b>	Antigen affinity
<b>UniProt</b>	Q8N4T4
<b>Applications</b>	Western Blot : 1:1000-2000
<b>Limitations</b>	This ARHGEF39 antibody is available for research use only.



Western blot testing of human 1) HepG2, 2) Jurkat, 3) Li-7 and 4) RPMI-8226 cell lysate with ARHGEF39 antibody at 1:2000. Predicted molecular weight: 38 kDa.

## Description

Additional name(s): Rho guanine nucleotide exchange factor 39; C9orf100

## Application Notes

Titration of the ARHGEF39 antibody may be required due to differences in protocols and secondary/substrate sensitivity.

## Immunogen

A portion of amino acids 180-211 from the human protein was used as the immunogen for the ARHGEF39 antibody.

## **Storage**

Aliquot the ARHGEF39 antibody and store frozen at -20oC or colder. Avoid repeated freeze-thaw cycles.