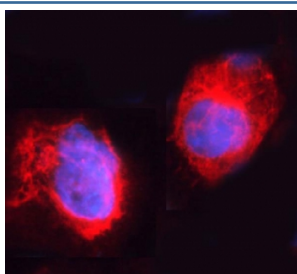


ARHGEF1 Antibody (R32513)

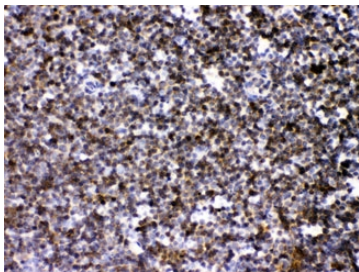
Catalog No.	Formulation	Size
R32513	0.5mg/ml if reconstituted with 0.2ml sterile DI water	100 ug

Bulk quote request

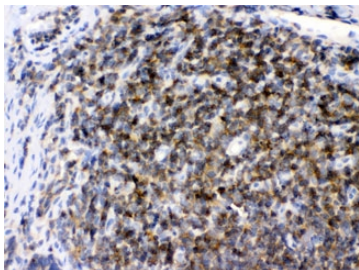
Availability	1-3 business days
Species Reactivity	Human, Mouse, Rat
Format	Antigen affinity purified
Host	Rabbit
Clonality	Polyclonal (rabbit origin)
Isotype	Rabbit IgG
Purity	Antigen affinity
Buffer	Lyophilized from 1X PBS with 2.5% BSA and 0.025% sodium azide
UniProt	Q92888
Localization	Cytoplasmic, membranous
Applications	Western Blot : 0.5-1ug/ml Immunohistochemistry (FFPE) : 1-2ug/ml Immunofluorescence (FFPE) : 2-4ug/ml Flow Cytometry : 1-3ug/million cells
Limitations	This ARHGEF1 antibody is available for research use only.



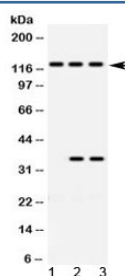
Immunofluorescent staining of FFPE human A431 cells with ARHGEF1 antibody (red) and DAPI nuclear stain (blue). HIER: steam section in pH6 citrate buffer for 20 min.



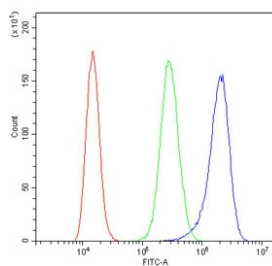
IHC testing of FFPE mouse lymph tissue with ARHGEF1 antibody at 1ug/ml. HIER: steam sections in pH6 citrate buffer for 20 min.



IHC testing of FFPE rat lymph tissue with ARHGEF1 antibody at 1ug/ml. HIER: steam sections in pH6 citrate buffer for 20 min.



Western blot testing of 1) rat brain, 2) human HeLa and 3) human Jurkat lysate with ARHGEF1 antibody at 0.5ug/ml. Predicted molecular weight ~102 kDa, but routinely observed at ~115 kDa.



Flow cytometry testing of human A431 cells with ARHGEF1 antibody at 1ug/million cells (blocked with goat sera); Red=cells alone, Green=isotype control, Blue= ARHGEF1 antibody.

Description

Rho guanine nucleotide exchange factor 1, also called p115-RhoGEF, is a protein that in humans is encoded by the ARHGEF1 gene. Rho GTPases play a fundamental role in numerous cellular processes that are initiated by extracellular stimuli that work through G protein coupled receptors. The encoded protein may form a complex with G proteins and stimulate Rho-dependent signals. Multiple alternatively spliced transcript variants have been found for this gene, but the full-length nature of some variants has not been defined.

Application Notes

Differences in protocols and secondary/substrate sensitivity may require the ARHGEF1 antibody to be titrated for optimal performance.

Immunogen

Amino acids 41-71 (EQNSQFQSLEQVKRRPAHLMALLQHVALQFE) from the human protein were used as the immunogen for the ARHGEF1 antibody.

Storage

After reconstitution, the ARHGEF1 antibody can be stored for up to one month at 4°C. For long-term, aliquot and store at -20°C. Avoid repeated freezing and thawing.