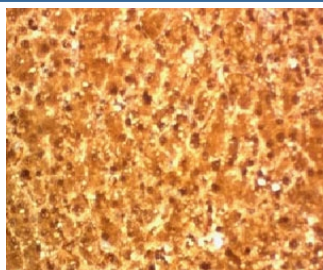


## Arginase 1 Antibody [clone T1ARG-1] (V7111)

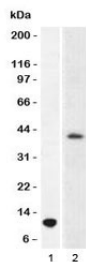
Catalog No.	Formulation	Size
V7111-100UG	0.2 mg/ml in 1X PBS with 0.1 mg/ml BSA (US sourced) and 0.05% sodium azide	100 ug
V7111-20UG	0.2 mg/ml in 1X PBS with 0.1 mg/ml BSA (US sourced) and 0.05% sodium azide	20 ug
V7111SAF-100UG	1 mg/ml in 1X PBS; BSA free, sodium azide free	100 ug
V7111IHC-7ML	Prediluted in 1X PBS with 0.1 mg/ml BSA (US sourced) and 0.05% sodium azide; *For IHC use only*	7 ml

[Bulk quote request](#)

<b>Availability</b>	1-3 business days
<b>Species Reactivity</b>	Human
<b>Format</b>	Purified
<b>Host</b>	Mouse
<b>Clonality</b>	Monoclonal (mouse origin)
<b>Isotype</b>	Mouse IgG3, kappa
<b>Clone Name</b>	T1ARG-1
<b>Purity</b>	Protein G affinity chromatography
<b>UniProt</b>	P05089
<b>Localization</b>	Cytoplasmic
<b>Applications</b>	Western Blot : 1-2ug/ml Immunohistochemistry (FFPE) : 2-4ug/ml for 30 min at RT (1) Prediluted IHC Only Format : incubate for 30 min at RT (2)
<b>Limitations</b>	This Arginase 1 antibody is available for research use only.



IHC testing of FFPE human hepatocellular carcinoma and Arginase 1 antibody.



Western blot testing of 1) partial recombinant ARG1 protein and 2) human liver lysate using Arginase 1 antibody. Predicted molecular weight ~35kDa.

## Description

Arginase catalyzes the hydrolysis of arginine to ornithine and urea. At least two isoforms of mammalian arginase exist (types I and II) which differ in their tissue distribution, subcellular localization, immunologic crossreactivity and physiologic function. The type I isoform is a cytosolic enzyme and expressed predominantly in the liver as a component of the urea cycle. Inherited deficiency of this enzyme results in argininemia, an autosomal recessive disorder characterized by hyperammonemia. Two transcript variants encoding different isoforms have been found for this gene. [RefSeq]

## Application Notes

Optimal dilution of the Arginase 1 antibody should be determined by the researcher.

1. Staining of formalin-fixed tissues requires boiling tissue sections in pH 9 10mM Tris with 1mM EDTA for 10-20 min followed by cooling at RT for 20 min
2. The prediluted format is supplied in a dropper bottle and is optimized for use in IHC. After epitope retrieval step (if required), drip mAb solution onto the tissue section and incubate at RT for 30 min.

## Immunogen

A C-terminal recombinant protein fragment from ARG1 was used as the immunogen for the Arginase 1 antibody.

## Storage

Store the Arginase 1 antibody at 2-8°C (with azide) or aliquot and store at -20°C or colder (without azide).