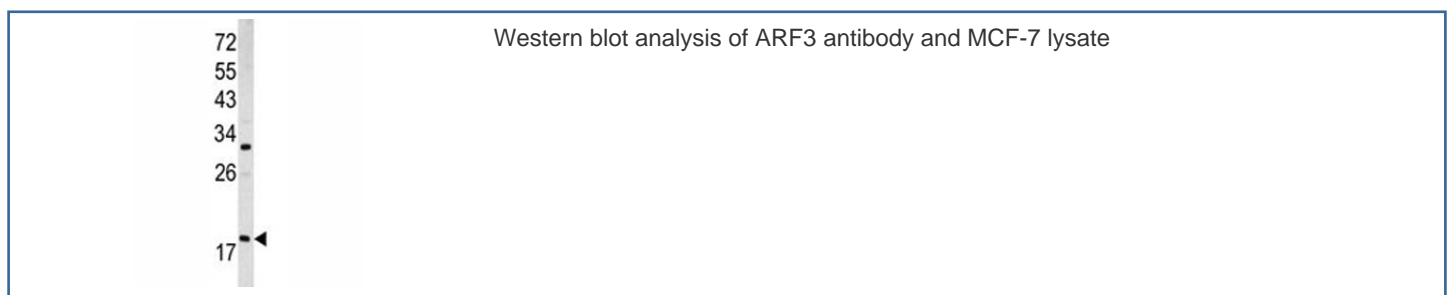


ARF3 Antibody (F49726)

| Catalog No. | Formulation | Size |
|---------------|--|---------|
| F49726-0.4ML | In 1X PBS, pH 7.4, with 0.09% sodium azide | 0.4 ml |
| F49726-0.08ML | In 1X PBS, pH 7.4, with 0.09% sodium azide | 0.08 ml |

[Bulk quote request](#)

| | |
|-----------------------------|--|
| Availability | 1-3 business days |
| Species Reactivity | Human |
| Predicted Reactivity | Mouse, Rat, Bovine, Primate, Xenopus |
| Format | Purified |
| Host | Rabbit |
| Clonality | Polyclonal (rabbit origin) |
| Isotype | Rabbit Ig |
| Purity | Purified |
| UniProt | P61204 |
| Applications | Western Blot : 1:1000 |
| Limitations | This ARF3 antibody is available for research use only. |



Description

ADP-ribosylation factor 3 (ARF3) is a member of the human ARF family. These small guanine nucleotide-binding proteins stimulate the ADP-ribosyltransferase activity of cholera toxin and play a role in vesicular trafficking and as activators of phospholipase D. ARF3 include 6 ARF proteins and 11 ARF-like proteins and constitute 1 family of the RAS superfamily. The ARF proteins are categorized as class I (ARF1, ARF2, and ARF3), class II (ARF4 and ARF5) and class III (ARF6) and members of each class share a common gene organization.

Application Notes

Titration of the ARF3 antibody may be required due to differences in protocols and secondary/substrate sensitivity.

Immunogen

A portion of amino acids 78-106 from the human protein was used as the immunogen for this ARF3 antibody.

Storage

Aliquot the ARF3 antibody and store frozen at -20°C or colder. Avoid repeated freeze-thaw cycles.