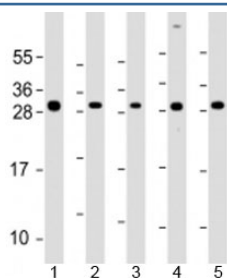


## ARD1A Antibody / NAA10 (F53909)

Catalog No.	Formulation	Size
F53909-0.2ML	In 1X PBS, pH 7.4, with 0.09% sodium azide	0.2 ml
F53909-0.05ML	In 1X PBS, pH 7.4, with 0.09% sodium azide	0.05 ml

[Bulk quote request](#)

<b>Availability</b>	1-3 business days
<b>Species Reactivity</b>	Human
<b>Predicted Reactivity</b>	Mouse, Bovine
<b>Format</b>	Antigen affinity purified
<b>Clonality</b>	Polyclonal (rabbit origin)
<b>Isotype</b>	Rabbit Ig
<b>Purity</b>	Antigen affinity
<b>UniProt</b>	P41227
<b>Applications</b>	Western Blot : 1:1000-2000
<b>Limitations</b>	This NAA10 antibody is available for research use only.



Western blot testing of human 1) SK-BR-3, 2) HeLa, 3) HCT116, 4) MCF-7 and 5) HL-60 cell lysate with NAA10 antibody at 1:2000. Predicted molecular weight: 26 kDa.

## Description

N-alpha-acetyltransferase 10 is the catalytic subunit of the N-terminal acetyltransferase A (NatA) complex which displays alpha (N-terminal) acetyltransferase activity. The NAT activity may be important for vascular, hematopoietic and neuronal growth and development. Without NAA15, displays epsilon (internal) acetyltransferase activity towards HIF1A, thereby promoting its degradation. Represses MYLK kinase activity by acetylation, and thus represses tumor cell migration. Acetylates, and stabilizes TSC2, thereby repressing mTOR activity and suppressing cancer development.

## Application Notes

Titration of the NAA10 antibody may be required due to differences in protocols and secondary/substrate sensitivity.

## **Immunogen**

A portion of amino acids 135-167 from the human protein was used as the immunogen for the NAA10 antibody.

## **Storage**

Aliquot the NAA10 antibody and store frozen at -20oC or colder. Avoid repeated freeze-thaw cycles.