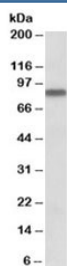


## APPL Antibody (R33528)

Catalog No.	Formulation	Size
R33528-100UG	0.5 mg/ml in 1X TBS, pH7.3, with 0.5% BSA (US sourced) and 0.02% sodium azide	100 ug

[Bulk quote request](#)

Availability	1-3 business days
Species Reactivity	Human
Format	Antigen affinity purified
Clonality	Polyclonal (goat origin)
Isotype	Goat Ig
Purity	Antigen affinity
Gene ID	26060
Applications	Western Blot : 0.3-1ug/ml ELISA (peptide) LOD : 1:2000
Limitations	This APPL antibody is available for research use only.



Western blot testing of human heart lysate with APPL antibody at 0.3ug/ml. Predicted molecular weight: ~80kDa.

## Description

Additional name(s) for this target protein: Adaptor protein containing pH domain, PTB domain and leucine zipper motif; APPL1

## Application Notes

Optimal dilution of the APPL antibody should be determined by the researcher.

## Immunogen

Amino acids DLGEGGKKRESEA were used as the immunogen for this APPL antibody.

## **Storage**

Aliquot and store the APPL antibody at -20oC.