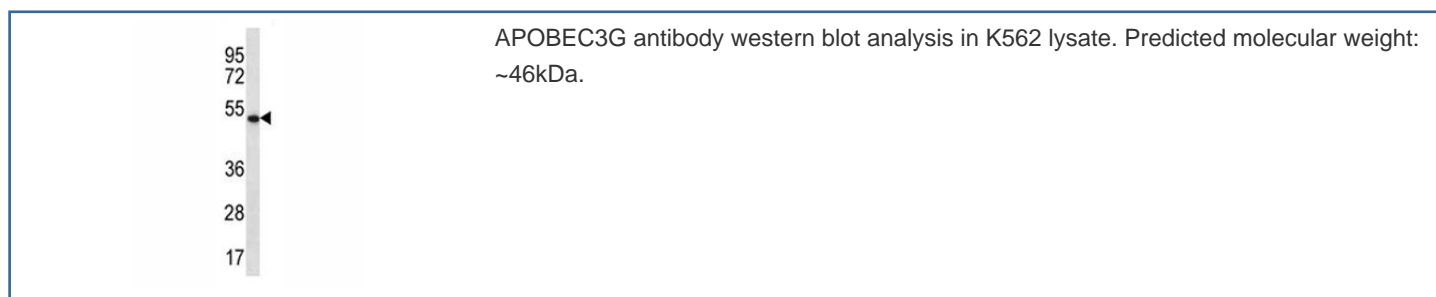


## APOBEC3G Antibody (F40028)

Catalog No.	Formulation	Size
F40028-0.4ML	In 1X PBS, pH 7.4, with 0.09% sodium azide	0.4 ml
F40028-0.08ML	In 1X PBS, pH 7.4, with 0.09% sodium azide	0.08 ml

[Bulk quote request](#)

<b>Availability</b>	1-3 business days
<b>Species Reactivity</b>	Human
<b>Format</b>	Antigen affinity purified
<b>Host</b>	Rabbit
<b>Clonality</b>	Polyclonal (rabbit origin)
<b>Isotype</b>	Rabbit Ig
<b>Purity</b>	Antigen affinity
<b>UniProt</b>	Q9HC16
<b>Localization</b>	Cytoplasmic, membranous
<b>Applications</b>	Western Blot : 1:1000
<b>Limitations</b>	This APOBEC3G antibody is available for research use only.



## Description

This gene is a member of the cytidine deaminase gene family. It is one of seven related genes or pseudogenes found in a cluster, thought to result from gene duplication, on chromosome 22. Members of the cluster encode proteins that are structurally and functionally related to the C to U RNA-editing cytidine deaminase APOBEC1. It is thought that the proteins may be RNA editing enzymes and have roles in growth or cell cycle control. Alternatively spliced transcript variants encoding different isoforms have been identified.

## Application Notes

Titration of the APOBEC3G antibody may be required due to differences in protocols and secondary/substrate sensitivity.

## Immunogen

A portion of amino acids 231-260 from the human protein was used as the immunogen for this APOBEC3G antibody.

## Storage

Aliquot the APOBEC3G antibody and store frozen at -20oC or colder. Avoid repeated freeze-thaw cycles.