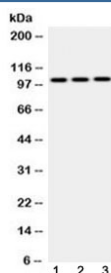


AP2B1 Antibody (R32628)

Catalog No.	Formulation	Size
R32628	0.5mg/ml if reconstituted with 0.2ml sterile DI water	100 ug

Bulk quote request

Availability	1-3 business days
Species Reactivity	Human, Mouse, Rat
Format	Antigen affinity purified
Host	Rabbit
Clonality	Polyclonal (rabbit origin)
Isotype	Rabbit IgG
Purity	Antigen affinity
Buffer	Lyophilized from 1X PBS with 2.5% BSA and 0.025% sodium azide
UniProt	P63010
Applications	Western Blot : 0.5-1ug/ml
Limitations	This AP2B1 antibody is available for research use only.



Western blot testing of 1) rat testis, 2) mouse brain and 3) human MCF7 cell lysate with AP2B1 antibody at 0.5ug/ml. Predicted molecular weight ~105 kDa.

Description

AP-2 complex subunit beta is a protein that in humans is encoded by the AP2B1 gene. It is mapped to 17q12. The protein encoded by this gene is one of two large chain components of the assembly protein complex 2, which serves to link clathrin to receptors in coated vesicles. The encoded protein is found on the cytoplasmic face of coated vesicles in the plasma membrane. Two transcript variants encoding different isoforms have been found for this gene.

Application Notes

Optimal dilution of the AP2B1 antibody should be determined by the researcher.

Immunogen

A human recombinant protein corresponding to amino acids Q311-R522 was used as the immunogen for the AP2B1 antibody.

Storage

After reconstitution, the AP2B1 antibody can be stored for up to one month at 4°C. For long-term, aliquot and store at -20°C. Avoid repeated freezing and thawing.