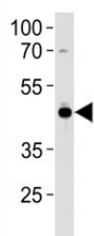


## AP2 Antibody (F47549)

Catalog No.	Formulation	Size
F47549-0.4ML	In 1X PBS, pH 7.4, with 0.09% sodium azide	0.4 ml
F47549-0.08ML	In 1X PBS, pH 7.4, with 0.09% sodium azide	0.08 ml

[Bulk quote request](#)

<b>Availability</b>	1-3 business days
<b>Species Reactivity</b>	Human
<b>Predicted Reactivity</b>	Bovine, Mouse, Rat
<b>Format</b>	Antigen affinity purified
<b>Host</b>	Rabbit
<b>Clonality</b>	Polyclonal (rabbit origin)
<b>Isotype</b>	Rabbit Ig
<b>Purity</b>	Antigen affinity
<b>UniProt</b>	P05549
<b>Applications</b>	Western Blot : 1:1000
<b>Limitations</b>	This AP2 antibody is available for research use only.



AP2 antibody western blot analysis in U251 lysate. Predicted molecular weight ~47 kDa.

## Description

Activator protein 2 is a sequence-specific DNA-binding protein that interacts with inducible viral and cellular enhancer elements to regulate transcription of selected genes. AP-2 factors bind to the consensus sequence 5'-GCCNNNGGC-3' and activate genes involved in a large spectrum of important biological functions including proper eye, face, body wall, limbs and neural tube development. They also suppress a number of genes including MCAM/MUC18, C/EBP alpha and MYC. AP-2 alpha is the only AP-2 protein required for early morphogenesis of the lens vesicle.

## **Application Notes**

Titration of the AP2 antibody may be required due to differences in protocols and secondary/substrate sensitivity.

## **Immunogen**

A portion of amino acids 104-133 from the human protein was used as the immunogen for this AP2 antibody.

## **Storage**

Aliquot the AP2 antibody and store frozen at -20oC or colder. Avoid repeated freeze-thaw cycles.