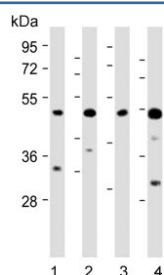


## AP1M1 Antibody (F54275)

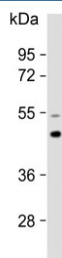
Catalog No.	Formulation	Size
F54275-0.4ML	In 1X PBS, pH 7.4, with 0.09% sodium azide	0.4 ml
F54275-0.08ML	In 1X PBS, pH 7.4, with 0.09% sodium azide	0.08 ml

[Bulk quote request](#)

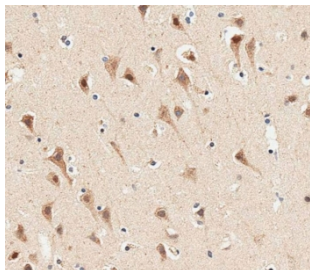
<b>Availability</b>	1-3 business days
<b>Species Reactivity</b>	Human, Mouse
<b>Format</b>	Purified
<b>Host</b>	Rabbit
<b>Clonality</b>	Polyclonal (rabbit origin)
<b>Isotype</b>	Rabbit Ig
<b>Purity</b>	Antigen affinity purified
<b>UniProt</b>	Q9BXS5
<b>Localization</b>	Cytoplasmic
<b>Applications</b>	Western Blot : 1:500-1:2000 Immunofluorescence : 1:25 Immunohistochemistry (FFPE) : 1:25
<b>Limitations</b>	This AP1M1 antibody is available for research use only.



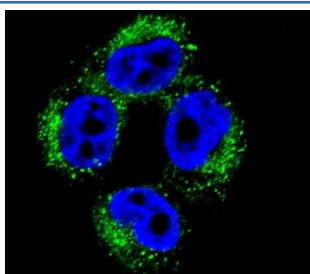
Western blot testing of 1) human PC-3, 2) human U-251 MG, 3) mouse NIH 3T3 and 4) mouse heart lysate with AP1M1 antibody. Predicted molecular weight ~49 kDa.



Western blot testing of human brain lysate with AP1M1 antibody. Predicted molecular weight ~49 kDa.



IHC testing of FFPE human brain tissue with AP1M1 antibody. HIER: steam section in pH6 citrate buffer for 20 min and allow to cool prior to staining.



Immunofluorescent staining of fixed and permeabilized human A375 cells with AP1M1 antibody (green) and DAPI nuclear stain (blue).

## Description

The protein encoded by this gene is the medium chain of the trans-Golgi network clathrin-associated protein complex AP-1. The other components of this complex are beta-prime-adaptin, gamma-adaptin, and the small chain AP1S1. This complex is located at the Golgi vesicle and links clathrin to receptors in coated vesicles. These vesicles are involved in endocytosis and Golgi processing. Alternatively spliced transcript variants encoding distinct protein isoforms have been found for this gene. [provided by RefSeq].

## Application Notes

The stated application concentrations are suggested starting points. Titration of the AP1M1 antibody may be required due to differences in protocols and secondary/substrate sensitivity.

## Immunogen

A portion of amino acids 199-227 from the human protein were used as the immunogen for the AP1M1 antibody.

## Storage

Aliquot the AP1M1 antibody and store frozen at -20oC or colder. Avoid repeated freeze-thaw cycles.

