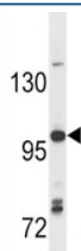


## Anti-TLR7 Antibody (F44379)

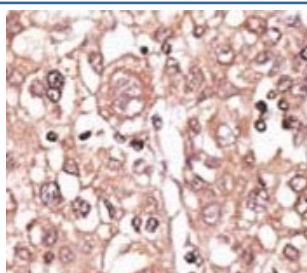
Catalog No.	Formulation	Size
F44379-0.4ML	In 1X PBS, pH 7.4, with 0.09% sodium azide	0.4 ml
F44379-0.08ML	In 1X PBS, pH 7.4, with 0.09% sodium azide	0.08 ml

[Bulk quote request](#)

<b>Availability</b>	1-3 business days
<b>Species Reactivity</b>	Human, Mouse
<b>Format</b>	Purified
<b>Host</b>	Rabbit
<b>Clonality</b>	Polyclonal (rabbit origin)
<b>Isotype</b>	Rabbit Ig
<b>Purity</b>	Purified
<b>UniProt</b>	Q9NYK1
<b>Applications</b>	Western Blot : 1:1000 IHC (Paraffin) : 1:50-1:100
<b>Limitations</b>	This anti-TLR7 antibody is available for research use only.



Anti-TLR7 antibody western blot analysis in Ramos lysate



IHC analysis of FFPE human hepatocarcinoma tissue stained with the anti-TLR7 antibody

## Description

Toll like receptor 7 is a key component of innate and adaptive immunity. TLRs (Toll-like receptors) control host immune response against pathogens through recognition of molecular patterns specific to microorganisms. TLR7 is a nucleotide-sensing TLR which is activated by single-stranded RNA. Acts via MYD88 and TRAF6, leading to NF-kappa-B activation, cytokine secretion and the inflammatory response (By similarity). [UniProt]

## Application Notes

Titration of the anti-TLR7 antibody may be required due to differences in protocols and secondary/substrate sensitivity.

## Immunogen

A portion of amino acids 98-128 from the human protein was used as the immunogen for this anti-TLR7 antibody.

## Storage

Aliquot the anti-TLR7 antibody and store frozen at -20oC or colder. Avoid repeated freeze-thaw cycles.