

## Anti-Mitochondria Antibody [clone SPM198] (V3079)

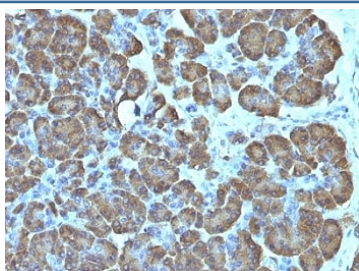
Catalog No.	Formulation	Size
V3079-100UG	0.2 mg/ml in 1X PBS with 0.1 mg/ml BSA (US sourced) and 0.05% sodium azide	100 ug
V3079-20UG	0.2 mg/ml in 1X PBS with 0.1 mg/ml BSA (US sourced) and 0.05% sodium azide	20 ug
V3079SAF-100UG	1 mg/ml in 1X PBS; BSA free, sodium azide free	100 ug
V3079IHC-7ML	Prediluted in 1X PBS with 0.1 mg/ml BSA (US sourced) and 0.05% sodium azide; *For IHC use only*	7 ml



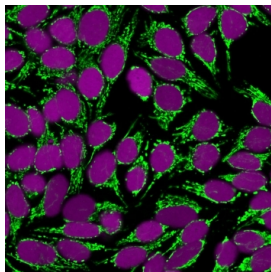
Citations (3)

[Bulk quote request](#)

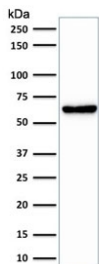
Availability	1-3 business days
Species Reactivity	Human
Format	Purified
Clonality	Monoclonal (mouse origin)
Isotype	Mouse IgG1, kappa
Clone Name	SPM198
Purity	Protein G affinity chromatography
UniProt	Not Known
Localization	Cytoplasmic (Mitochondria)
Applications	Immunofluorescence : 1-2ug/ml Western Blot : 1-2ug/ml Immunohistochemistry (FFPE) : 1-2ug/ml for 30 min at RT
Limitations	This anti-Mitochondria antibody is available for research use only.



Formalin-fixed, paraffin-embedded human pancreas stained with anti-Mitochondria antibody (SPM198).



Immunofluorescent staining of fixed human HeLa cells with anti-Mitochondria antibody (clone SPM198, green) and Reddot nuclear stain.



Western blot testing of human HeLa cell lysate with anti-Mitochondria antibody (clone SPM198). Expected molecular weight ~60 kDa.

## Description

This mAb recognizes a 60kDa antigen associated with the mitochondria in human cells. It can be used to stain mitochondria in cell or tissue preparations and can be used as a mitochondrial marker in subcellular fractions. It produces a spaghetti-like pattern in normal and malignant cells. It reacts specifically with human cells, including neurons and embryonic stem cells.

## Application Notes

Optimal dilution of the anti-Mitochondria antibody should be determined by the researcher.

1. Staining of formalin-fixed tissues requires boiling tissue sections in 10mM Tris with 1mM EDTA, pH 9, for 10-20 min followed by cooling at RT for 20 min.
2. The prediluted format is supplied in a dropper bottle and is optimized for use in IHC. After epitope retrieval step (if required), drip mAb solution onto the tissue section and incubate at RT for 30 min.

## Immunogen

A semi-purified mitochondrial preparation was used as the immunogen for the anti-Mitochondria antibody.

## Storage

Store the anti-Mitochondria antibody at 2-8°C (with azide) or aliquot and store at -20°C or colder (without azide).