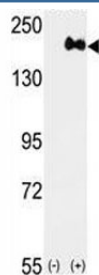


Anti-HER2 Antibody (F50601)

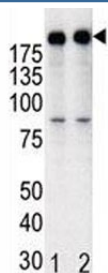
Catalog No.	Formulation	Size
F50601-0.4ML	In 1X PBS, pH 7.4, with 0.09% sodium azide	0.4 ml
F50601-0.08ML	In 1X PBS, pH 7.4, with 0.09% sodium azide	0.08 ml

[Bulk quote request](#)

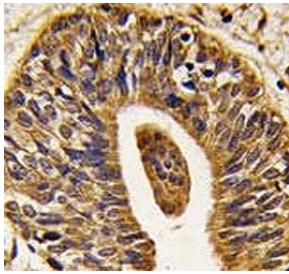
Availability	1-3 business days
Species Reactivity	Human
Predicted Reactivity	Mouse, Rat
Format	Antigen affinity purified
Clonality	Polyclonal (rabbit origin)
Isotype	Rabbit Ig
Purity	Antigen affinity
UniProt	P04626
Applications	Western Blot : 1:1000 IHC (Paraffin) : 1:10-1:50
Limitations	This anti-HER2 antibody is available for research use only.



Western blot analysis of anti-HER2 antibody and 293 cell lysate (2 ug/lane) either nontransfected (Lane 1) or transiently transfected with the ERBB2 gene (2).



Western blot analysis of anti-HER2 in T47D cell lysate, either noninduced (Lane 1) or induced with HRG (2).



IHC analysis of FFPE human prostate carcinoma tissue stained with anti-HER2 antibody

Description

HER2/ErbB2, a member of the EGF receptor family, is an essential component of a neuregulin-receptor complex, although neuregulins do not interact with it alone. GP30 is a potential ligand for this receptor. This protein is not activated by EGF, TGF- α and amphiregulin. ErbB2 potentially forms a heterodimer with each of the other ERBB receptors. An interaction with PRKCABP has been suggested. Ligand-binding to this Type I membrane protein may increase phosphorylation on tyrosine residues.

Application Notes

Titration of the anti-HER2 antibody may be required due to differences in protocols and secondary/substrate sensitivity.

Immunogen

A portion of amino acids 1227-1255 from the human protein was used as the immunogen for this anti-HER2 antibody.

Storage

Aliquot the anti-HER2 antibody and store frozen at -20°C or colder. Avoid repeated freeze-thaw cycles.