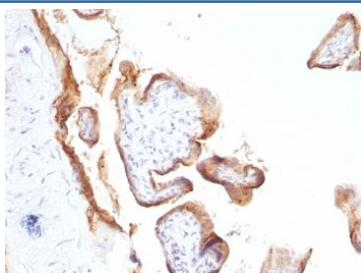


## Anti-EGFR Antibody [clone SPM622] (V2486)

Catalog No.	Formulation	Size
V2486-100UG	0.2 mg/ml in 1X PBS with 0.1 mg/ml BSA (US sourced) and 0.05% sodium azide	100 ug
V2486-20UG	0.2 mg/ml in 1X PBS with 0.1 mg/ml BSA (US sourced) and 0.05% sodium azide	20 ug
V2486SAF-100UG	1 mg/ml in 1X PBS; BSA free, sodium azide free	100 ug
V2486IHC-7ML	Prediluted in 1X PBS with 0.1 mg/ml BSA (US sourced) and 0.05% sodium azide; *For IHC use only*	7 ml

[Bulk quote request](#)

<b>Availability</b>	1-3 business days
<b>Species Reactivity</b>	Human
<b>Format</b>	Purified
<b>Host</b>	Mouse
<b>Clonality</b>	Monoclonal (mouse origin)
<b>Isotype</b>	Mouse IgG2a, kappa
<b>Clone Name</b>	SPM622
<b>Purity</b>	Protein G affinity chromatography
<b>UniProt</b>	P00533
<b>Localization</b>	Cell surface
<b>Applications</b>	Immunohistochemistry (FFPE) : 2-4ug/ml for 30 min at RT
<b>Limitations</b>	This anti-EGFR antibody is available for research use only.



IHC: Formalin-fixed, paraffin-embedded human placenta stained with anti-EGFR antibody (SPM622).

## Description

This mAb recognizes a protein of 170kDa, identified as EGFR. EGFR is type I receptor tyrosine kinase with sequence homology to erbB-1, -2, -3 -4 or HER-1, -2, -3 -4. It binds to Epidermal Growth Factor (EGF), Transforming Growth Factor- $\alpha$  (TGF- $\alpha$ ), Heparin-binding EGF (HB-EGF), amphiregulin, betacellulin and epiregulin. EGFR is overexpressed in tumors of breast, brain, bladder, lung, gastric, head & neck, esophagus, cervix, vulva, ovary, and endometrium. It is predominantly present in squamous cell carcinomas.

## Application Notes

Optimal dilution of the anti-EGFR antibody should be determined by the researcher.

1. Digest formalin-fixed tissues with Protease at 1mg/ml PBS, pH 7.4 for 10 min at 37°C
2. The prediluted format is supplied in a dropper bottle and is optimized for use in IHC. After epitope retrieval step (if required), drip mAb solution onto the tissue section and incubate at RT for 30 min.

## Immunogen

Human EGFR purified from A431 cells was used as the immunogen for the anti-EGFR antibody.

## Storage

Store the anti-EGFR antibody at 2-8°C (with azide) or aliquot and store at -20°C or colder (without azide).