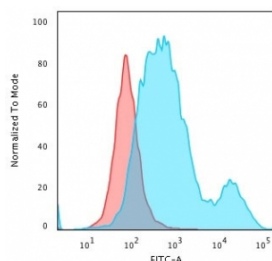


Anti-Cytokeratin 18 Antibody [clone SPM510] (V9041)

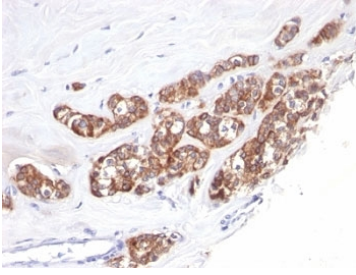
Catalog No.	Formulation	Size
V9041-100UG	0.2 mg/ml in 1X PBS with 0.1 mg/ml BSA (US sourced) and 0.05% sodium azide	100 ug
V9041-20UG	0.2 mg/ml in 1X PBS with 0.1 mg/ml BSA (US sourced) and 0.05% sodium azide	20 ug
V9041SAF-100UG	1 mg/ml in 1X PBS; BSA free, sodium azide free	100 ug
V9041IHC-7ML	Prediluted in 1X PBS with 0.1 mg/ml BSA (US sourced) and 0.05% sodium azide; *For IHC use only*	7 ml

[Bulk quote request](#)

Availability	1-3 business days
Species Reactivity	Human
Format	Purified
Host	Mouse
Clonality	Monoclonal (mouse origin)
Isotype	Mouse IgG1, kappa
Clone Name	SPM510
Purity	Protein G affinity chromatography
UniProt	P05783
Localization	Cytoplasmic
Applications	Flow Cytometry : 1-2ug/10 ⁶ cells Immunohistochemistry (FFPE) : 1-2ug/ml for 30 min at RT
Limitations	This anti-Cytokeratin 18 antibody is available for research use only.



Flow cytometry testing of PFA-fixed human HeLa cells with anti-Cytokeratin 18 antibody (clone SPM510); Red=isotype control, Blue= anti-Cytokeratin 18 antibody.



IHC: Formalin-fixed, paraffin-embedded human breast carcinoma stained with anti-Cytokeratin 18 antibody (clone SPM510).

Description

This mAb reacts with a wide variety of simple epithelia. It does not react with stratified squamous epithelia. It reacts with epithelial tumors of the gastrointestinal tract, lung, breast, pancreas, ovary, and thyroid. Cytokeratin 18, which belongs to the type A (acidic) subfamily of low molecular weight keratins, exists in combination with cytokeratin 8. It was reported that tissues from gastrointestinal tract are positive for both cytokeratin 8 and 18 but do not contain cytokeratin 14. Tissues from gastrointestinal tract, respiratory tract and urogenital tract, as well as endocrine and exocrine tissues and mesothelial cells are positive for cytokeratin 18.

Application Notes

The optimal dilution of the anti-Cytokeratin 18 antibody for each application should be determined by the researcher.

1. Staining of formalin-fixed tissues requires boiling tissue sections in pH 9 10mM Tris with 1mM EDTA for 10-20 min followed by cooling at RT for 20 minutes.
2. The prediluted format is supplied in a dropper bottle and is optimized for use in IHC. After epitope retrieval step (if required), drip mAb solution onto the tissue section and incubate at RT for 30 min.

Immunogen

Human breast cancer PMC 42 cells were used as the immunogen for this anti-Cytokeratin 18 antibody.

Storage

Store the anti-Cytokeratin 18 antibody at 2-8oC (with azide) or aliquot and store at -20oC or colder (without azide).