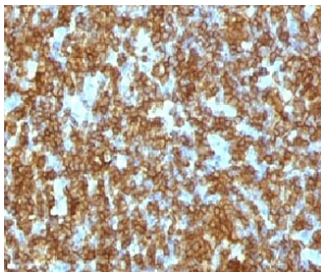


## Anti-CD45RA Antibody [clone CDLA45RA-1] (V7071)

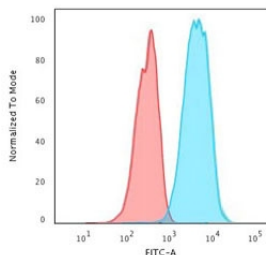
Catalog No.	Formulation	Size
V7071-100UG	0.2 mg/ml in 1X PBS with 0.1 mg/ml BSA (US sourced) and 0.05% sodium azide	100 ug
V7071-20UG	0.2 mg/ml in 1X PBS with 0.1 mg/ml BSA (US sourced) and 0.05% sodium azide	20 ug
V7071SAF-100UG	1 mg/ml in 1X PBS; BSA free, sodium azide free	100 ug
V7071IHC-7ML	Prediluted in 1X PBS with 0.1 mg/ml BSA (US sourced) and 0.05% sodium azide; *For IHC use only*	7 ml

[Bulk quote request](#)

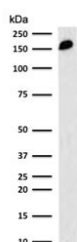
<b>Species Reactivity</b>	Human
<b>Format</b>	Purified
<b>Clonality</b>	Monoclonal (mouse origin)
<b>Isotype</b>	Mouse IgG2a, kappa
<b>Clone Name</b>	CDLA45RA-1
<b>Purity</b>	Protein G affinity chromatography
<b>Buffer</b>	1X PBS, pH 7.4
<b>UniProt</b>	P08575
<b>Localization</b>	Cell surface
<b>Applications</b>	<p>Western Blot : 1-2ug/ml</p> <p>Flow Cytometry : 0.5-1ug/million cells</p> <p>Immunofluorescence : 1-2 ug/ml</p> <p>Immunohistology (FFPE) : 0.5-1.0ug/ml for 30 min at RT</p> <p>Prediluted IHC Only Format : incubate for 30 min at RT (1)</p>
<b>Limitations</b>	This anti-CD45RA antibody is available for research use only.



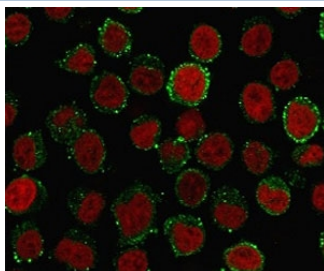
IHC testing of FFPE human tonsil and anti-CD45RA antibody (clone CDLA45RA-1).  
HIER: boil sections in pH6 10mM citrate buffer for 10-20 minutes, followed by cooling at RT for 20 minutes, prior to staining.



Flow cytometry testing of PFA-fixed human Jurkat cells with CD45RA antibody (clone CDLA45RA-1); Red=isotype control, Blue= CD45RA antibody.



Western blot testing of human spleen lysate with CD45RA antibody (clone CDLA45RA-1). Expected molecular weight: 147-220 kDa depending on glycosylation level.



Immunofluorescence staining of PFA-fixed human Jurkat cells with CD45RA antibody (clone CDLA45RA-1, green) and Reddot nuclear stain (red).

## Description

CD45RA is an isoform of the human leukocyte common antigen (CD45). Human CD45 contains three exons which encode peptide segments designated A, B and C, respectively. The differential splicing of the exons generates at least five isoforms, ABC, AB, BC, B and O. CD45RA is expressed on 40-50% of peripheral CD4<sup>+</sup> T-cells, 50% of peripheral CD8<sup>+</sup> T-cells, B-cells, and leukemic B-cell lines. T-cells expressing CD45RA are naive or virgin T-cells. T-cells expressing CD45RO are memory T-cells. CD45RA and CD45RO define complementary, predominantly non-overlapping populations of resting peripheral T-cells.

## Application Notes

Titration of the anti-CD45RA antibody may be required for optimal performance.

1. The prediluted format is supplied in a dropper bottle and is optimized for use in IHC. After epitope retrieval step (if required), drip mAb solution onto the tissue section and incubate at RT for 30 min.

## Immunogen

Recombinant human protein was used as immunogen for this anti-CD45RA antibody.

## Storage

The anti-CD45RA antibody (with azide) can be stored at 2-8oC. The azide-free format should be aliquoted and stored at -20oC or colder.