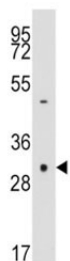


Anti-Caspase-3 Antibody (F50514)

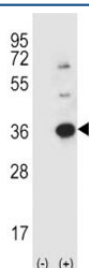
Catalog No.	Formulation	Size
F50514-0.4ML	In 1X PBS, pH 7.4, with 0.09% sodium azide	0.4 ml
F50514-0.08ML	In 1X PBS, pH 7.4, with 0.09% sodium azide	0.08 ml

[Bulk quote request](#)

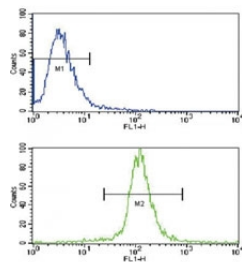
Availability	1-3 business days
Species Reactivity	Human
Format	Purified
Host	Rabbit
Clonality	Polyclonal (rabbit origin)
Isotype	Rabbit Ig
Purity	Purified
UniProt	P42574
Applications	Western Blot : 1:1000 Flow Cytometry : 1:10-1:50 IHC (Paraffin) : 1:10-1:50
Limitations	This anti-Caspase-3 antibody is available for research use only.



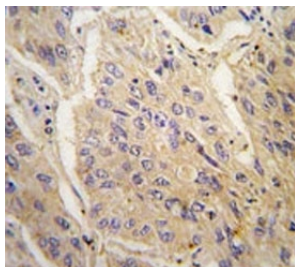
Western blot analysis of anti-Caspase-3 antibody and NCI-H460 lysate. Expected size ~32 KDa



Western blot analysis using anti-Caspase-3 antibody and 293 cell lysate (2 ug/lane) either nontransfected (Lane 1) or transiently transfected (2) with the CASP3 gene.



Flow cytometric analysis of NCI-H460 cells using anti-Caspase-3 antibody (bottom histogram) compared to a negative control cell (top histogram). FITC-conjugated goat-anti-rabbit secondary Ab was used for the analysis.



IHC analysis of FFPE human lung carcinoma tissue stained with anti-Caspase-3 antibody

Description

CASP3 is a member of the cysteine-aspartic acid protease (caspase) family. Sequential activation of caspases plays a central role in the execution-phase of cell apoptosis. Caspases exist as inactive proenzymes which undergo proteolytic processing at conserved aspartic residues to produce two subunits, large and small, that dimerize to form the active enzyme. This protein cleaves and activates caspases 6, 7 and 9, and the protein itself is processed by caspases 8, 9 and 10. It is the predominant caspase involved in the cleavage of amyloid-beta 4A precursor protein, which is associated with neuronal death in Alzheimer's disease.

Application Notes

Titration of the anti-Caspase-3 antibody may be required due to differences in protocols and secondary/substrate sensitivity.

Immunogen

A portion of amino acids 60-90 from the human protein was used as the immunogen for this anti-Caspase-3 antibody.

Storage

Aliquot the anti-Caspase-3 antibody and store frozen at -20oC or colder. Avoid repeated freeze-thaw cycles.