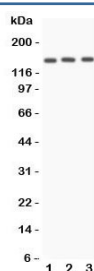


## Angiotensin Converting Enzyme Antibody (ACE) (R31319)

Catalog No.	Formulation	Size
R31319	0.5mg/ml if reconstituted with 0.2ml sterile DI water	100 ug

[Bulk quote request](#)

Availability	1-3 business days
Species Reactivity	Human, Mouse
Format	Antigen affinity purified
Host	Rabbit
Clonality	Polyclonal (rabbit origin)
Isotype	Rabbit IgG
Purity	Antigen affinity
Buffer	Lyophilized from 1X PBS with 2.5% BSA and 0.025% sodium azide/thimerosal
UniProt	P12821
Applications	Western Blot : 0.5-1ug/ml
Limitations	This Angiotensin Converting Enzyme antibody is available for research use only.



Western blot testing of Angiotensin Converting Enzyme antibody and Lane 1: A549; 2: HeLa; 3: 22RV1 lysate. Expected molecular weight 140-170 kDa.

## Description

Angiotensin converting enzyme (ACE), also called DCP or CD143 is a zinc-containing dipeptidyl carboxypeptidase widely distributed in mammalian tissues and is thought to play a critical role in blood pressure regulation. This gene is mapped to 17q23.3. This gene encodes an enzyme involved in catalyzing the conversion of angiotensin I into a physiologically active peptide angiotensin II.

## Application Notes

The stated application concentrations are suggested starting amounts. Titration of the Angiotensin Converting Enzyme antibody may be required due to differences in protocols and secondary/substrate sensitivity.

## Immunogen

An amino acid sequence from the N-terminus of human ACE (ANLPLAKRQQYNALL) was used as the immunogen for this Angiotensin Converting Enzyme antibody.

## Storage

After reconstitution, the Angiotensin Converting Enzyme antibody can be stored for up to one month at 4oC. For long-term, aliquot and store at -20oC. Avoid repeated freezing and thawing.