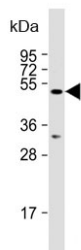


## AMSH-like protease Antibody / STAMBPL1 (F54819)

Catalog No.	Formulation	Size
F54819-0.4ML	In 1X PBS, pH 7.4, with 0.09% sodium azide	0.4 ml
F54819-0.08ML	In 1X PBS, pH 7.4, with 0.09% sodium azide	0.08 ml

[Bulk quote request](#)

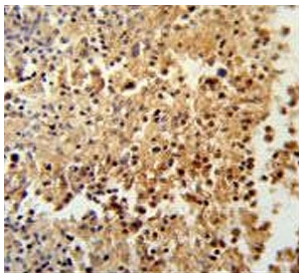
<b>Availability</b>	1-3 business days
<b>Species Reactivity</b>	Human, Mouse
<b>Format</b>	Purified
<b>Clonality</b>	Polyclonal (rabbit origin)
<b>Isotype</b>	Rabbit Ig
<b>Purity</b>	Antigen affinity purified
<b>UniProt</b>	Q96FJ0
<b>Localization</b>	Cytoplasmic
<b>Applications</b>	Flow Cytometry : 1:10-1:50 (1x10e6 cells) Immunohistochemistry (FFPE) : 1:50-1:100 Western Blot : 1:500-1:1000
<b>Limitations</b>	This AMSH-like protease antibody is available for research use only.



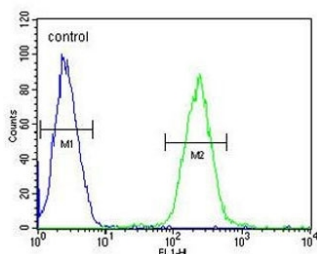
Western blot testing of human HeLa cell lysate with AMSH-like protease antibody.  
Predicted molecular weight ~50 kDa.



Western blot testing of mouse testis tissue lysate with AMSH-like protease antibody.  
Predicted molecular weight ~50 kDa.



IHC testing of FFPE human spleen tissue with AMSH-like protease antibody. HIER: steam section in pH6 citrate buffer for 20 min and allow to cool prior to staining.



Flow cytometry testing of human CCRF-CEM cells with AMSH-like protease antibody; Blue=isotype control, Green= AMSH-like protease antibody.

## Description

STAMBPL1 is zinc metalloprotease that specifically cleaves 'Lys-63'-linked polyubiquitin chains. Does not cleave 'Lys-48'-linked polyubiquitin chains.

## Application Notes

The stated application concentrations are suggested starting points. Titration of the AMSH-like protease antibody may be required due to differences in protocols and secondary/substrate sensitivity.

## Immunogen

A portion of amino acids 135-163 from the human protein was used as the immunogen for the AMSH-like protease antibody.

## Storage

Aliquot the AMSH-like protease antibody and store frozen at -20oC or colder. Avoid repeated freeze-thaw cycles.