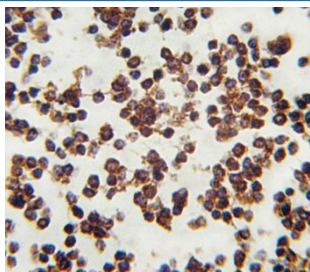


## ALOX15 Antibody (F54516)

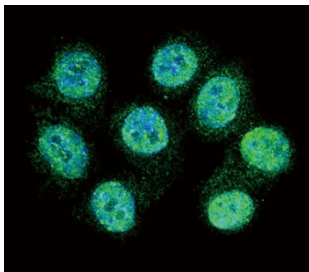
Catalog No.	Formulation	Size
F54516-0.2ML	In 1X PBS, pH 7.4, with 0.09% sodium azide	0.2 ml
F54516-0.05ML	In 1X PBS, pH 7.4, with 0.09% sodium azide	0.05 ml

[Bulk quote request](#)

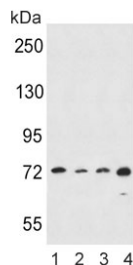
<b>Availability</b>	1-3 business days
<b>Species Reactivity</b>	Human
<b>Format</b>	Purified
<b>Host</b>	Rabbit
<b>Clonality</b>	Polyclonal (rabbit origin)
<b>Isotype</b>	Rabbit Ig
<b>Purity</b>	Purified
<b>UniProt</b>	P16050
<b>Localization</b>	Cytoplasmic
<b>Applications</b>	Immunofluorescence : 1:25 Immunohistochemistry (FFPE) : 1:25 Western Blot : 1:500-1:2000
<b>Limitations</b>	This ALOX15 antibody is available for research use only.



IHC testing of FFPE human lymph tissue with ALOX15 antibody. HIER: steam section in pH6 citrate buffer for 20 min and allow to cool prior to staining.



Immunofluorescent staining of human HeLa cells with ALOX15 antibody (green) and DAPI nuclear stain (blue).



Western blot testing of human 1) HeLa, 2) A549, 3) K562 and 4) MDA-MB-453 cell lysate with ALOX15 antibody. Predicted molecular weight ~75 kDa.

## Description

ALOX15 converts arachidonic acid to 15S-hydroperoxyeicosatetraenoic acid. The protein also acts on C-12 of arachidonate as well as on linoleic acid.

## Application Notes

The stated application concentrations are suggested starting points. Titration of the ALOX15 antibody may be required due to differences in protocols and secondary/substrate sensitivity.

## Immunogen

A portion of amino acids 610-643 from the human protein was used as the immunogen for the ALOX15 antibody.

## Storage

Aliquot the ALOX15 antibody and store frozen at -20°C or colder. Avoid repeated freeze-thaw cycles.