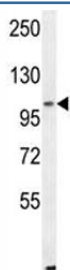


ALDH1L2 Antibody (F41352)

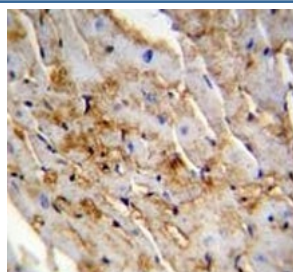
Catalog No.	Formulation	Size
F41352-0.4ML	In 1X PBS, pH 7.4, with 0.09% sodium azide	0.4 ml
F41352-0.08ML	In 1X PBS, pH 7.4, with 0.09% sodium azide	0.08 ml

[Bulk quote request](#)

Availability	1-3 business days
Species Reactivity	Mouse
Predicted Reactivity	Xenopus
Format	Antigen affinity purified
Host	Rabbit
Clonality	Polyclonal (rabbit origin)
Isotype	Rabbit Ig
Purity	Antigen affinity
UniProt	Q3SY69
Applications	Western Blot : 1:1000 IHC (Paraffin) : 1:50-1:100
Limitations	This ALDH1L2 antibody is available for research use only.



ALDH1L2 antibody western blot analysis in mouse NIH3T3 lysate



ALDH1L2 antibody immunohistochemistry analysis in formalin fixed and paraffin embedded mouse heart tissue.

Description

Mitochondrial 10-formyltetrahydrofolate dehydrogenase

Application Notes

Titration of the ALDH1L2 antibody may be required due to differences in protocols and secondary/substrate sensitivity.

Immunogen

A portion of amino acids 743-772 from the human protein was used as the immunogen for this ALDH1L2 antibody.

Storage

Aliquot the ALDH1L2 antibody and store frozen at -20oC or colder. Avoid repeated freeze-thaw cycles.