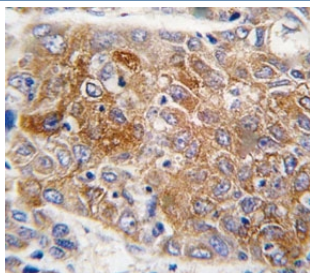


ALDH1L1 Antibody (F50825)

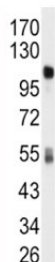
Catalog No.	Formulation	Size
F50825-0.4ML	In 1X PBS, pH 7.4, with 0.09% sodium azide	0.4 ml
F50825-0.08ML	In 1X PBS, pH 7.4, with 0.09% sodium azide	0.08 ml

[Bulk quote request](#)

Availability	1-3 business days
Species Reactivity	Human, Mouse
Format	Purified
Clonality	Polyclonal (rabbit origin)
Isotype	Rabbit Ig
Purity	Purified
UniProt	O75891
Applications	Western Blot : 1:1000 IHC (Paraffin) : 1:10-1:50
Limitations	This ALDH1L1 antibody is available for research use only.



IHC analysis of FFPE human hepatocarcinoma tissue stained with ALDH1L1 antibody



Western blot analysis of ALDH1L1 antibody and mouse liver tissue lysate.

Description

ALDH1L1 catalyzes the conversion of 10-formyltetrahydrofolate, NADP, and water to tetrahydrofolate, NADPH, and carbon dioxide. The encoded protein belongs to the aldehyde dehydrogenase family and is responsible for formate oxidation in vivo. Deficiencies in this gene can result in an accumulation of formate and subsequent methanol poisoning.

Application Notes

Titration of the ALDH1L1 antibody may be required due to differences in protocols and secondary/substrate sensitivity.

Immunogen

A portion of amino acids 717-746 from the human protein was used as the immunogen for this ALDH1L1 antibody.

Storage

Aliquot the ALDH1L1 antibody and store frozen at -20oC or colder. Avoid repeated freeze-thaw cycles.