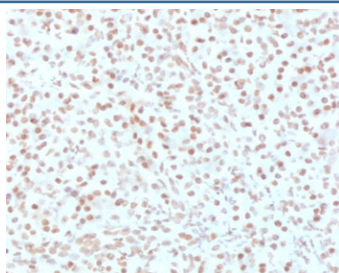


AKT1 Antibody [clone RASTPK-1] (V3798)

Catalog No.	Formulation	Size
V3798-100UG	0.2 mg/ml in 1X PBS with 0.1 mg/ml BSA (US sourced) and 0.05% sodium azide	100 ug
V3798-20UG	0.2 mg/ml in 1X PBS with 0.1 mg/ml BSA (US sourced) and 0.05% sodium azide	20 ug
V3798SAF-100UG	1 mg/ml in 1X PBS; BSA free, sodium azide free	100 ug

[Bulk quote request](#)

Availability	1-3 business days
Species Reactivity	Human
Format	Purified
Clonality	Monoclonal (mouse origin)
Isotype	Mouse IgG2b, kappa
Clone Name	RASTPK-1
Purity	Protein G affinity chromatography
UniProt	P31749
Localization	Nucleus, plasma membrane, cytoplasm
Applications	IHC (FFPE) : 1-2ug/ml for 30 min at RT
Limitations	This AKT1 antibody is available for research use only.



IHC testing of FFPE human pancreas with AKT1 antibody (clone RASTPK-1). HIER: boil tissue sections in pH 9 10mM Tris with 1mM EDTA for 10-20 min followed by cooling at RT for 20 min.

Description

AKT1 is one of 3 closely related serine/threonine-protein kinases (AKT1, AKT2 and AKT3) called the AKT kinase, and which regulate many processes including metabolism, proliferation, cell survival, growth and angiogenesis. This is

mediated through serine and/or threonine phosphorylation of a range of downstream substrates. [UniProt]

Application Notes

The stated application concentrations are suggested starting points. Titration of the AKT1 antibody may be required due to differences in protocols and secondary/substrate sensitivity.

Immunogen

A portion of amino acids 85-189 from the human protein was used as the immunogen for the AKT1 antibody.

Storage

Store the AKT1 antibody at 2-8oC (with azide) or aliquot and store at -20oC or colder (without azide).