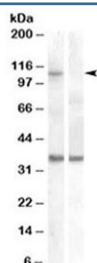


## AGO1 Antibody (R34538)

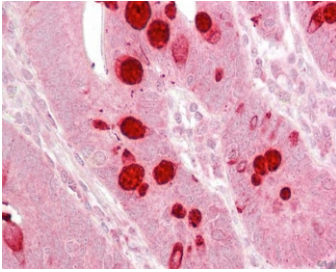
| Catalog No.  | Formulation   | Size   |
|--------------|---|--------|
| R34538-100UG | 0.5 mg/ml in 1X TBS, pH7.3, with 0.5% BSA (US sourced) and 0.02% sodium azide | 100 ug |

[Bulk quote request](#)

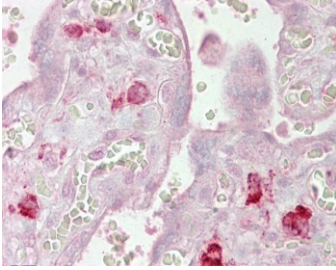
|                      |   |
|----------------------|---|
| Availability         | 1-3 business days   |
| Species Reactivity   | Human   |
| Predicted Reactivity | Mouse, Rat, Dog   |
| Format               | Antigen affinity purified   |
| Clonality            | Polyclonal (goat origin)  |
| Isotype              | Goat Ig   |
| Purity               | Antigen affinity  |
| Gene ID              | 26523   |
| Localization         | Cytoplasmic P-bodies  |
| Applications         | Western Blot : 1-3ug/ml<br>IHC (FFPE) : 2.5ug/ml<br>ELISA (peptide) LOD : 1:16000 |
| Limitations          | This AGO1 antibody is available for research use only.                            |



Western blot of HEK293 lysate overexpressing human EIF2C1/AGO1 and probed with AGO1 antibody (non-transfected HEK293 lysate in lane B). Predicted molecular weight: ~95kDa, observed here at ~110kDa.



IHC testing of FFPE human small intestine tissue with AGO1 antibody at 2.5ug/ml. Required HIER: steamed antigen retrieval with pH6 citrate buffer; AP-staining.



IHC testing of FFPE human placental tissue with AGO1 antibody at 2.5ug/ml. Required HIER: steamed antigen retrieval with pH6 citrate buffer; AP-staining.

## Description

Additional name(s) for this target protein: Argonaute 1, Eukaryotic translation initiation factor 2C, 1; EIF2C1

## Application Notes

Optimal dilution of the AGO1 antibody should be determined by the researcher.

## Immunogen

Amino acids KNASYNLDPYIQEF were used as the immunogen for this AGO1 antibody.

## Storage

Aliquot and store the AGO1 antibody at -20oC.