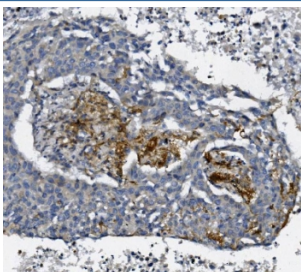


AFAP1 Antibody (RQ6241)

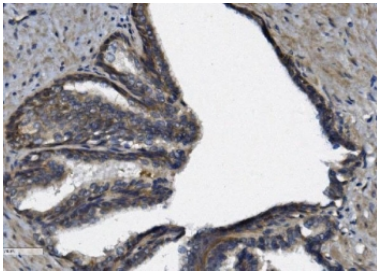
Catalog No.	Formulation	Size
RQ6241	0.5mg/ml if reconstituted with 0.2ml sterile DI water	100 ug

[Bulk quote request](#)

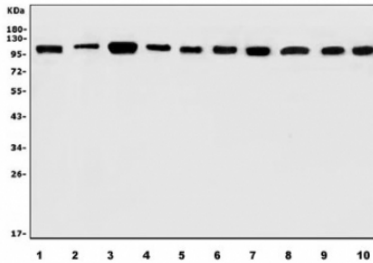
Availability	1-3 business days
Species Reactivity	Human, Mouse, Rat
Format	Antigen affinity purified
Host	Rabbit
Clonality	Polyclonal (rabbit origin)
Isotype	Rabbit IgG
Purity	Affinity purified
Buffer	Lyophilized from 1X PBS with 2% Trehalose
UniProt	Q8N556
Applications	Western Blot : 1-2ug/ml Immunohistochemistry (FFPE) : 2-5ug/ml Flow Cytometry : 1-3ug/million cells Direct ELISA : 0.1-0.5ug/ml
Limitations	This AFAP1 antibody is available for research use only.



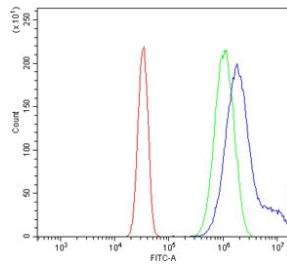
IHC staining of FFPE human lung cancer with AFAP1 antibody. HIER: boil tissue sections in pH8 EDTA for 20 min and allow to cool before testing.



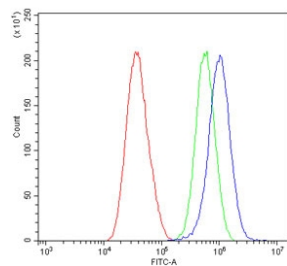
IHC staining of FFPE human prostate cancer with AFAP1 antibody. HIER: boil tissue sections in pH8 EDTA for 20 min and allow to cool before testing.



Western blot testing of 1) human Hela, 2) human SH-SY5Y, 3) human A431, 4) human U-87 MG, 5) rat brain, 6) rat lung, 7) rat stomach, 8) mouse brain, 9) mouse lung and 10) mouse stomach lysate with AFAP1 antibody. Predicted molecular weight ~120 kDa.



Flow cytometry testing of human U-2 OS cells with AFAP1 antibody at 1ug/million cells (blocked with goat sera); Red=cells alone, Green=isotype control, Blue= AFAP1 antibody.



Flow cytometry testing of human A549 cells with AFAP1 antibody at 1ug/million cells (blocked with goat sera); Red=cells alone, Green=isotype control, Blue= AFAP1 antibody.

Description

Actin filament-associated protein 1 is a protein that in humans is encoded by the AFAP1 gene. The protein encoded by this gene is a Src binding partner. It may represent a potential modulator of actin filament integrity in response to cellular signals, and may function as an adaptor protein by linking Src family members and/or other signaling proteins to actin filaments. Multiple transcript variants encoding different isoforms have been found for this gene.

Application Notes

Optimal dilution of the AFAP1 antibody should be determined by the researcher.

Immunogen

A human recombinant partial protein (amino acids A498-T730) was used as the immunogen for the AFAP1 antibody.

Storage

After reconstitution, the AFAP1 antibody can be stored for up to one month at 4°C. For long-term, aliquot and store at -20°C. Avoid repeated freezing and thawing.

